



Datasheet for ABIN559972
anti-ZFH3 antibody (AA 2811-2910)



[Go to Product page](#)

3 Images

Overview

Quantity:	100 µg
Target:	ZFH3
Binding Specificity:	AA 2811-2910
Reactivity:	Human
Host:	Mouse
Clonality:	Monoclonal
Conjugate:	This ZFH3 antibody is un-conjugated
Application:	ELISA, Western Blotting (WB), Immunofluorescence (IF)

Product Details

Purpose:	Mouse monoclonal antibody raised against a partial recombinant ZFH3.
Immunogen:	ZFH3 (NP_008816, 2811 a.a. ~ 2910 a.a) partial recombinant protein with GST tag. MW of the GST tag alone is 26 KDa.
Sequence:	EDFESPSMSS VNLNFDQTKL DNDDCSSVNT AITDTTGGDE GNADNDSATG IATETKSSSA PNEGLTKAAM MAMSEYEDRL SSGLVSPAPS FYSKEYDNEG
Clone:	3B1
Isotype:	IgG1
Cross-Reactivity:	Human
Characteristics:	Antibody Reactive Against Recombinant Protein.

Target Details

Target:	ZFHX3
Alternative Name:	ZFHX3 (ZFHX3 Products)
Background:	Full Gene Name: zinc finger homeobox 3 Synonyms: ATBF1,ATBT
Gene ID:	463
NCBI Accession:	NM_006885
Pathways:	Regulation of Muscle Cell Differentiation, Skeletal Muscle Fiber Development

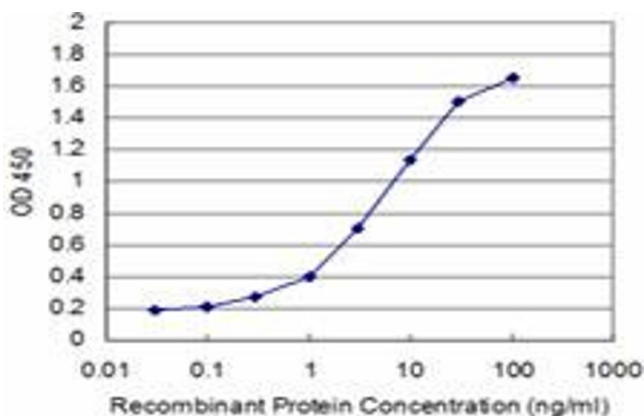
Application Details

Application Notes:	Optimal working dilution should be determined by the investigator.
Restrictions:	For Research Use only

Handling

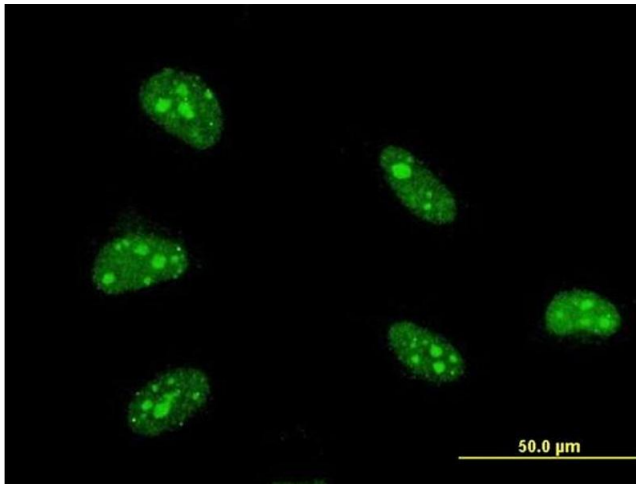
Buffer:	In 1x PBS, pH 7.4
Handling Advice:	Aliquot to avoid repeated freezing and thawing.
Storage:	-20 °C
Storage Comment:	Store at -20°C or lower. Aliquot to avoid repeated freezing and thawing.

Images



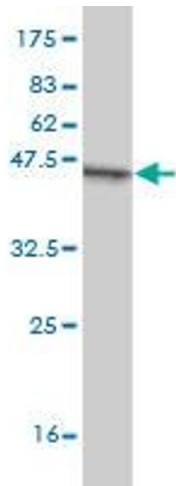
ELISA

Image 1. Detection limit for recombinant GST tagged ZFHX3 is approximately 0.3ng/ml as a capture antibody.



Immunofluorescence

Image 2. Immunofluorescence of monoclonal antibody to ZFHX3 on HeLa cell. [antibody concentration 10 ug/ml]



Western Blotting

Image 3. Western Blot detection against Immunogen (36.74 KDa) .