



[Go to Product page](#)

Datasheet for ABIN560024

## anti-BAG1 antibody (AA 241-345)

### 1 Image

#### Overview

Quantity:	50 µL
Target:	BAG1
Binding Specificity:	AA 241-345
Reactivity:	Human
Host:	Mouse
Clonality:	Polyclonal
Conjugate:	This BAG1 antibody is un-conjugated
Application:	Western Blotting (WB), ELISA

#### Product Details

Purpose:	Mouse polyclonal antibody raised against a partial recombinant BAG1.
Immunogen:	BAG1 (NP_004314, 241 a.a. ~ 345 a.a) partial recombinant protein with GST tag.
Sequence:	EKIADQLEEL NKELTGIQQG FLPKDLQAEA LCKLDRRVKA TIEQFMKILE EIDTLILPEN FKDSRLKRKG LVKKVQAFLA ECDTVEQNIC QETERLQSTN FALAE
Cross-Reactivity:	Human
Characteristics:	Antibody Reactive Against Recombinant Protein.

#### Target Details

Target:	BAG1
Alternative Name:	BAG1 ( <a href="#">BAG1 Products</a> )

## Target Details

Background: Full Gene Name: BCL2-associated athanogene  
Synonyms: RAP46

Gene ID: 573

NCBI Accession: [NM\\_004323](#)

## Application Details

Application Notes: Optimal working dilution should be determined by the investigator.

Restrictions: For Research Use only

## Handling

Format: Liquid

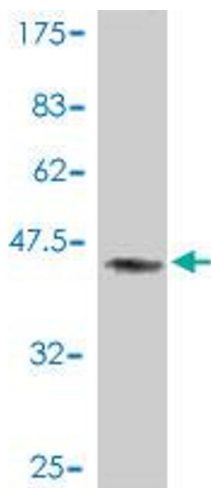
Buffer: 50 % glycerol

Handling Advice: Aliquot to avoid repeated freezing and thawing.

Storage: -20 °C

Storage Comment: Store at -20°C or lower. Aliquot to avoid repeated freezing and thawing.

## Images



### Western Blotting

**Image 1.** Western Blot detection against Immunogen (37.66 kDa).