



[Go to Product page](#)

Datasheet for ABIN560059
anti-BICD1 antibody (AA 1-70)

1 Image

Overview

Quantity:	50 µL
Target:	BICD1
Binding Specificity:	AA 1-70
Reactivity:	Human
Host:	Mouse
Clonality:	Polyclonal
Conjugate:	This BICD1 antibody is un-conjugated
Application:	Western Blotting (WB), ELISA

Product Details

Purpose:	Mouse polyclonal antibody raised against a partial recombinant BICD1.
Immunogen:	BICD1 (NP_001705, 1 a.a. ~ 70 a.a) partial recombinant protein with GST tag.
Sequence:	MAAEVLQTV DHYKTEIERL TKELTETTHE KIQAAYGLV VLEEKLTQK QYDELEAEYD SLKQELEQLK
Cross-Reactivity:	Human
Characteristics:	Antibody Reactive Against Recombinant Protein.

Target Details

Target:	BICD1
Alternative Name:	BICD1 (BICD1 Products)

Target Details

Background:	Full Gene Name: bicaudal D homolog 1 (Drosophila) Synonyms: BICD
Gene ID:	636
NCBI Accession:	NM_001714
Pathways:	Ribonucleoprotein Complex Subunit Organization , Regulation of G-Protein Coupled Receptor Protein Signaling , Maintenance of Protein Location

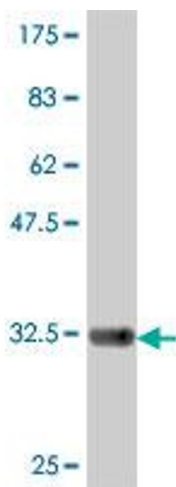
Application Details

Application Notes:	Optimal working dilution should be determined by the investigator.
Restrictions:	For Research Use only

Handling

Format:	Liquid
Buffer:	50 % glycerol
Handling Advice:	Aliquot to avoid repeated freezing and thawing.
Storage:	-20 °C
Storage Comment:	Store at -20°C or lower. Aliquot to avoid repeated freezing and thawing.

Images



Western Blotting

Image 1. Western Blot detection against Immunogen (33.81 kDa).