



Datasheet for ABIN560070
anti-BLVRB antibody (AA 107-206)



[Go to Product page](#)

2 Images

Overview

Quantity:	50 µL
Target:	BLVRB
Binding Specificity:	AA 107-206
Reactivity:	Human
Host:	Mouse
Clonality:	Polyclonal
Conjugate:	This BLVRB antibody is un-conjugated
Application:	Western Blotting (WB), ELISA

Product Details

Purpose:	Mouse polyclonal antibody raised against a partial recombinant BLVRB.
Immunogen:	BLVRB (NP_000704, 107 a.a. ~ 206 a.a) partial recombinant protein with GST tag.
Sequence:	VACTSAFLW DPTKVPPRLQ AVTDDHIRMH KVLRESGLKY VAVMPPHIGD QPLTGAYTVT LDGRGPSRVI SKHDLGHFML RCLTTDEYDG HSTYPSHQYQ
Cross-Reactivity:	Human
Characteristics:	Antibody Reactive Against Recombinant Protein.

Target Details

Target:	BLVRB
Alternative Name:	BLVRB (BLVRB Products)

Target Details

Background:	Full Gene Name: biliverdin reductase B (flavin reductase (NADPH)) Synonyms: BVRB,FLR,MGC117413,SDR43U1
Gene ID:	645
NCBI Accession:	NM_000713

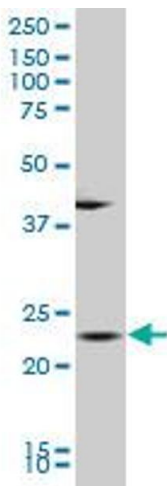
Application Details

Application Notes:	Optimal working dilution should be determined by the investigator.
Restrictions:	For Research Use only

Handling

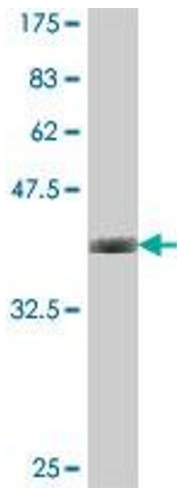
Format:	Liquid
Buffer:	50 % glycerol
Handling Advice:	Aliquot to avoid repeated freezing and thawing.
Storage:	-20 °C
Storage Comment:	Store at -20°C or lower. Aliquot to avoid repeated freezing and thawing.

Images



Western Blotting

Image 1. BLVRB polyclonal antibody (A01), Lot # 060104JC01 Western Blot analysis of BLVRB expression in K-562 .



Western Blotting

Image 2. Western Blot detection against Immunogen (37.11 kDa).