



[Go to Product page](#)

Datasheet for ABIN560104
anti-KLF5 antibody (AA 358-457)

1 Image

Overview

Quantity:	50 µL
Target:	KLF5
Binding Specificity:	AA 358-457
Reactivity:	Human
Host:	Mouse
Clonality:	Polyclonal
Conjugate:	This KLF5 antibody is un-conjugated
Application:	Western Blotting (WB), ELISA

Product Details

Purpose:	Mouse polyclonal antibody raised against a partial recombinant KLF5.
Immunogen:	KLF5 (NP_001721, 358 a.a. ~ 457 a.a) partial recombinant protein with GST tag.
Sequence:	RYNRRSNPDL EKRRHYCDY PGCTKVYTKS SHLKAHLRTH TGEKPYKCTW EGCDWRFARS DELTRHYRKH TGAKPFQCGV CNRSFSRSDH LALHMKRHQN
Cross-Reactivity:	Human
Characteristics:	Antibody Reactive Against Recombinant Protein.

Target Details

Target:	KLF5
Alternative Name:	KLF5 (KLF5 Products)

Target Details

Background: Full Gene Name: Kruppel-like factor 5 (intestinal)
Synonyms: BTEB2,CKLF,IKLF

Gene ID: 688

NCBI Accession: [NM_001730](#)

Application Details

Application Notes: Optimal working dilution should be determined by the investigator.

Restrictions: For Research Use only

Handling

Format: Liquid

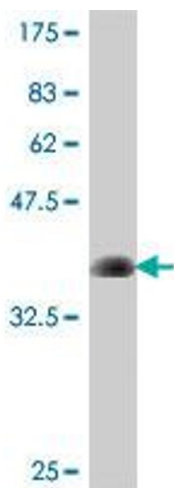
Buffer: 50 % glycerol

Handling Advice: Aliquot to avoid repeated freezing and thawing.

Storage: -20 °C

Storage Comment: Store at -20°C or lower. Aliquot to avoid repeated freezing and thawing.

Images



Western Blotting

Image 1. Western Blot detection against Immunogen (37.11 kDa).