



Datasheet for ABIN560198  
**anti-CBL antibody (AA 736-835)**



[Go to Product page](#)

5 Images

Overview

Quantity:	100 µg
Target:	CBL
Binding Specificity:	AA 736-835
Reactivity:	Human
Host:	Mouse
Clonality:	Monoclonal
Conjugate:	This CBL antibody is un-conjugated
Application:	Western Blotting (WB), ELISA, Immunoprecipitation (IP)

Product Details

Purpose:	Mouse monoclonal antibody raised against a partial recombinant CBL.
Immunogen:	CBL (NP_005179, 736 a.a. ~ 835 a.a) partial recombinant protein with GST tag. MW of the GST tag alone is 26 KDa.
Sequence:	NIQSQAPSIT ESSTFGEGNL AAAHANTGPE ESENEDDGYD VPKPPVPAVL ARRTLSDISN ASSSFGWLSL DGDPTTNVTE GSQVPERPPK PFPRRINSER
Clone:	6D12
Isotype:	IgG1
Cross-Reactivity:	Human
Characteristics:	Antibody Reactive Against Recombinant Protein.

## Target Details

Target:	CBL
Alternative Name:	CBL ( <a href="#">CBL Products</a> )
Background:	Full Gene Name: Cas-Br-M (murine) ecotropic retroviral transforming sequence Synonyms: C-CBL,CBL2,RNF55
Gene ID:	867
NCBI Accession:	<a href="#">NM_005188</a>
Pathways:	<a href="#">TCR Signaling</a> , <a href="#">Interferon-gamma Pathway</a> , <a href="#">EGFR Signaling Pathway</a> , <a href="#">EGFR Downregulation</a> , <a href="#">VEGFR1 Specific Signals</a>

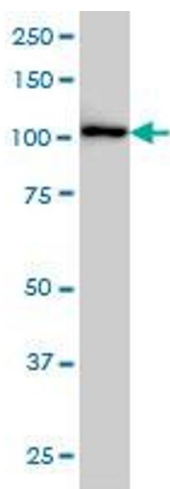
## Application Details

Application Notes:	Optimal working dilution should be determined by the investigator.
Restrictions:	For Research Use only

## Handling

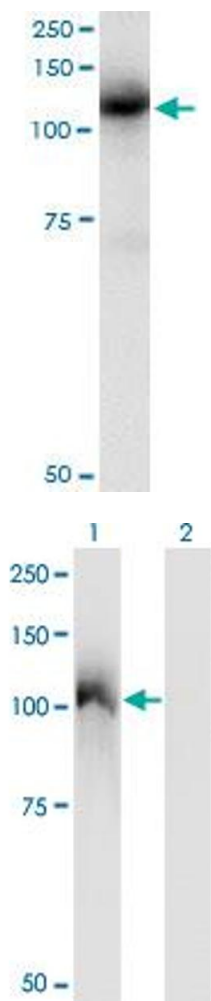
Buffer:	In 1x PBS, pH 7.4
Handling Advice:	Aliquot to avoid repeated freezing and thawing.
Storage:	-20 °C
Storage Comment:	Store at -20°C or lower. Aliquot to avoid repeated freezing and thawing.

## Images



### Western Blotting

**Image 1.** CBL monoclonal antibody (M01), clone 6D12 Western Blot analysis of CBL expression in K-562 .



### Immunoprecipitation

**Image 2.** Immunoprecipitation of CBL transfected lysate using anti-CBL monoclonal antibody and Protein A Magnetic Bead , and immunoblotted with CBL monoclonal antibody.

### Western Blotting

**Image 3.** Western Blot analysis of CBL expression in transfected 293T cell line by CBL monoclonal antibody (M01), clone 6D12.

Lane 1: CBL transfected lysate (Predicted MW: 99.6 kDa).

Lane 2: Non-transfected lysate.

Please check the [product details page](#) for more images. Overall 5 images are available for ABIN560198.