

Datasheet for ABIN560214
anti-Cyclin E1 antibody (AA 311-410)



[Go to Product page](#)

1 Image

1 Publication

Overview

Quantity:	50 µL
Target:	Cyclin E1 (CCNE1)
Binding Specificity:	AA 311-410
Reactivity:	Human
Host:	Mouse
Clonality:	Polyclonal
Conjugate:	This Cyclin E1 antibody is un-conjugated
Application:	Western Blotting (WB), ELISA

Product Details

Purpose:	Mouse polyclonal antibody raised against a partial recombinant CCNE1.
Immunogen:	CCNE1 (NP_001229, 311 a.a. ~ 410 a.a) partial recombinant protein with GST tag.
Sequence:	ELMQKVSGYQ WCDIENCVKW MVPFAMVIRE TGSSKCLKHFR GVADEDAHNI QTHRDSL DLL DKARAKKAML SEQNRASPLP SGLLTPPQSG KKQSSGPEMA
Cross-Reactivity:	Human
Characteristics:	Antibody Reactive Against Recombinant Protein.

Target Details

Target:	Cyclin E1 (CCNE1)
Alternative Name:	CCNE1 (CCNE1 Products)

Target Details

Background: Full Gene Name: cyclin E1
Synonyms: CCNE

Gene ID: 898

NCBI Accession: [NM_001238](#)

Pathways: [Cell Division Cycle](#), [Intracellular Steroid Hormone Receptor Signaling Pathway](#), [Nuclear Hormone Receptor Binding](#), [Mitotic G1-G1/S Phases](#)

Application Details

Application Notes: Optimal working dilution should be determined by the investigator.

Restrictions: For Research Use only

Handling

Format: Liquid

Buffer: 50 % glycerol

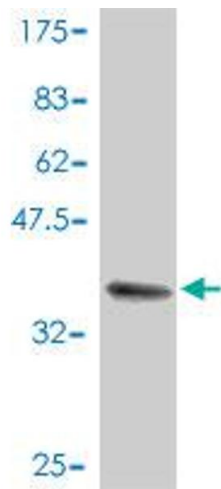
Handling Advice: Aliquot to avoid repeated freezing and thawing.

Storage: -20 °C

Storage Comment: Store at -20°C or lower. Aliquot to avoid repeated freezing and thawing.

Publications

Product cited in: Hudelist, Singer, Pischinger, Kaserer, Manavi, Kubista, Czerwenka: "Proteomic analysis in human breast cancer: identification of a characteristic protein expression profile of malignant breast epithelium." in: **Proteomics**, Vol. 6, Issue 6, pp. 1989-2002, (2006) ([PubMed](#)).



Western Blotting

Image 1. Western Blot detection against Immunogen (37.11 kDa) .