



[Go to Product page](#)

Datasheet for ABIN560237
anti-CD80 antibody (AA 35-288)

2 Images

Overview

Quantity:	100 µg
Target:	CD80
Binding Specificity:	AA 35-288
Reactivity:	Human
Host:	Mouse
Clonality:	Monoclonal
Conjugate:	This CD80 antibody is un-conjugated
Application:	ELISA, Proximity Ligation Assay (PLA)

Product Details

Purpose:	Mouse monoclonal antibody raised against a full length recombinant CD80.
Immunogen:	CD80 (AAH42665, 35 a.a. ~ 288 a.a) full-length recombinant protein with GST tag. MW of the GST tag alone is 26 KDa.
Sequence:	VIHVTKEVKE VATLSCGHNV SVEELAQTRI YWQKEKKMVL TMMSGDMNIW PEYKNRTIFD ITNNLSIVIL ALRPSDEGTY ECVVLKYEKD AFKREHLAEV TLSVKADFPT PSISDFEIPT SNIRRIICST SGGFPEPHLS WLENGEELNA INTTVSQDPE TELYAVSSKL DFNMTTNHSF MCLIKYGHLR VNQTFNWNTT KQEHFPDNL PSWAITLISV NGIFVICCLT YCFAPRCRER RRNERLRRES VRPV
Clone:	1G1
Isotype:	IgG1
Cross-Reactivity:	Human

Product Details

Characteristics: Antibody Reactive Against Recombinant Protein.

Target Details

Target: CD80

Alternative Name: CD80 ([CD80 Products](#))

Background: Full Gene Name: CD80 Molecule
Synonyms: CD28LG,CD28LG1,LAB7

Gene ID: 941

Pathways: [TCR Signaling](#), [Fc-epsilon Receptor Signaling Pathway](#), [EGFR Signaling Pathway](#), [Neurotrophin Signaling Pathway](#), [Positive Regulation of Immune Effector Process](#), [Cancer Immune Checkpoints](#)

Application Details

Application Notes: Optimal working dilution should be determined by the investigator.

Restrictions: For Research Use only

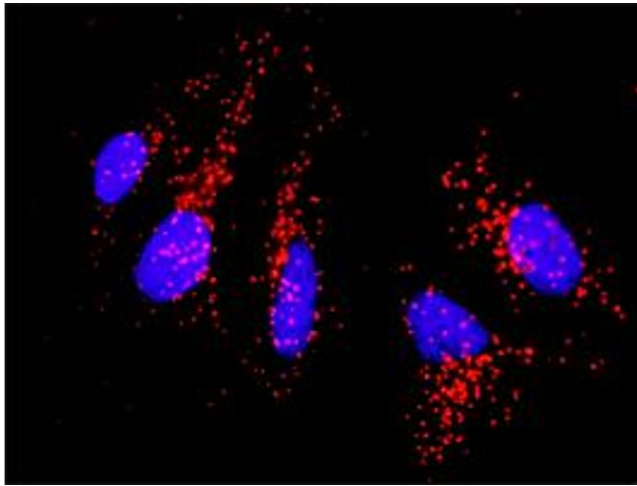
Handling

Buffer: In 1x PBS, pH 7.4

Handling Advice: Aliquot to avoid repeated freezing and thawing.

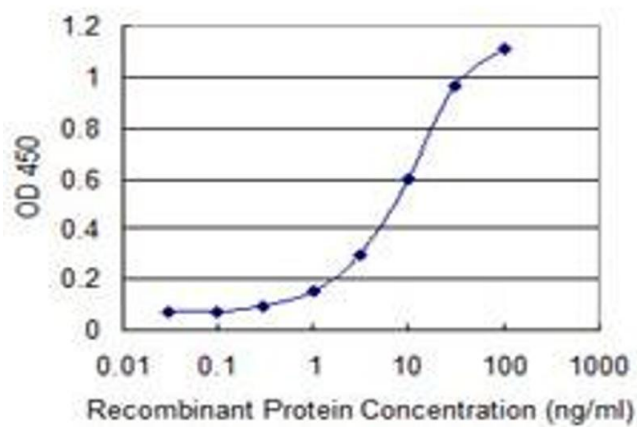
Storage: -20 °C

Storage Comment: Store at -20°C or lower. Aliquot to avoid repeated freezing and thawing.



Proximity Ligation Assay

Image 1. Proximity Ligation Analysis of protein-protein interactions between CD86 and CD80. HeLa cells were stained with anti-CD86 rabbit purified polyclonal 1:1200 and anti-CD80 mouse monoclonal antibody 1:50. Each red dot represents the detection of protein-protein interaction complex, and nuclei were counterstained with DAPI (blue).



ELISA

Image 2. Detection limit for recombinant GST tagged CD80 is 0.3 ng/ml as a capture antibody.