

Datasheet for ABIN560269  
**anti-CDC25A antibody (AA 151-250)**

## 3 Images

[Go to Product page](#)

## Overview

Quantity:	100 µg
Target:	CDC25A
Binding Specificity:	AA 151-250
Reactivity:	Human
Host:	Mouse
Clonality:	Monoclonal
Conjugate:	This CDC25A antibody is un-conjugated
Application:	Western Blotting (WB), ELISA, Proximity Ligation Assay (PLA)

## Product Details

Purpose:	Mouse monoclonal antibody raised against a partial recombinant CDC25A.
Immunogen:	CDC25A (AAH07401, 151 a.a. ~ 250 a.a) partial recombinant protein with GST tag. MW of the GST tag alone is 26 KDa.
Sequence:	PVRPVSRGCL HSHGLQEGKD LFTQRQNSAP ARMLSSNERD SSEPGNFIPL FTPQSPVTAT LSDEDDGFVD LLDGENLKNE EETPSCMASL WTAPLVMRTT
Clone:	3D5
Isotype:	IgG2a
Cross-Reactivity:	Human
Characteristics:	Antibody Reactive Against Recombinant Protein.

Target Details

Target:	CDC25A
Alternative Name:	CDC25A (CDC25A Products)
Background:	Full Gene Name: cell division cycle 25 homolog A (S. pombe) Synonyms: CDC25A2
Gene ID:	993
Pathways:	Cell Division Cycle, Mitotic G1-G1/S Phases, M Phase

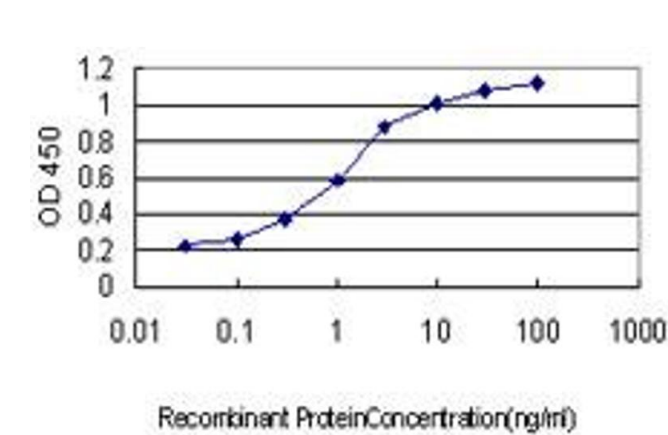
Application Details

Application Notes:	Optimal working dilution should be determined by the investigator.
Restrictions:	For Research Use only

Handling

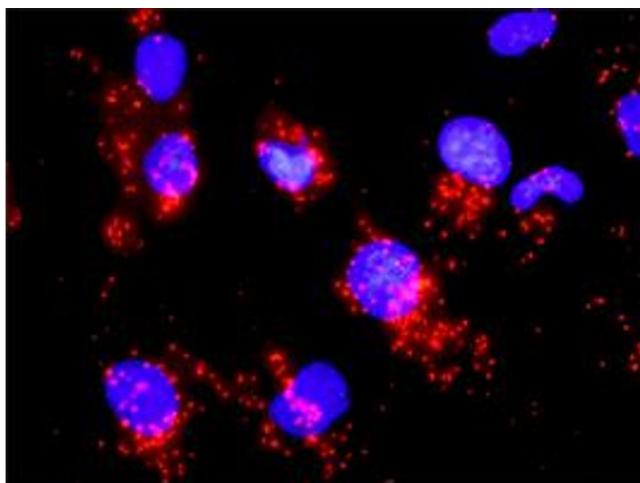
Buffer:	In 1x PBS, pH 7.4
Handling Advice:	Aliquot to avoid repeated freezing and thawing.
Storage:	-20 °C
Storage Comment:	Store at -20°C or lower. Aliquot to avoid repeated freezing and thawing.

Images



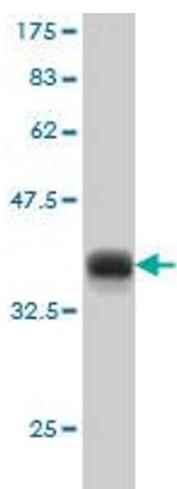
**ELISA**

**Image 1.** Detection limit for recombinant GST tagged CDC25A is approximately 0.03ng/ml as a capture antibody.



### Proximity Ligation Assay

**Image 2.** Proximity Ligation Analysis of protein-protein interactions between CCNB1 and CDC25A. Mahlavu cells were stained with anti-CCNB1 rabbit purified polyclonal 1:1200 and anti-CDC25A mouse monoclonal antibody 1:50. Each red dot represents the detection of protein-protein interaction complex, and nuclei were counterstained with DAPI (blue).



### Western Blotting

**Image 3.** Western Blot detection against Immunogen (36.63 kDa).