

Datasheet for ABIN560274
anti-E-cadherin antibody (AA 381-480)



[Go to Product page](#)

6 Images

1 Publication

Overview

Quantity:	100 µg
Target:	E-cadherin (CDH1)
Binding Specificity:	AA 381-480
Reactivity:	Human
Host:	Mouse
Clonality:	Monoclonal
Conjugate:	This E-cadherin antibody is un-conjugated
Application:	Western Blotting (WB), ELISA, Immunohistochemistry (Paraffin-embedded Sections) (IHC (p)), Proximity Ligation Assay (PLA)

Product Details

Purpose:	Mouse monoclonal antibody raised against a partial recombinant CDH1.
Immunogen:	CDH1 (NP_004351, 381 a.a. ~ 480 a.a) partial recombinant protein with GST tag. MW of the GST tag alone is 26 KDa.
Sequence:	KGQVPENEAN VVITTLKVTD ADAPNTPAWE AVYTILNDDG GQFVVTNPV NNDGILKTAK GLDFEAKQYQY ILHVAVTNVV PFEVSLTTST ATVTVDVLDV
Clone:	3F4
Isotype:	IgG1
Cross-Reactivity:	Human
Characteristics:	Antibody Reactive Against Recombinant Protein.

Target Details

Target:	E-cadherin (CDH1)
Alternative Name:	CDH1 (CDH1 Products)
Background:	Full Gene Name: cadherin 1, type 1, E-cadherin (epithelial) Synonyms: Arc-1,CD324,CDHE,ECAD,LCAM,UVO
Gene ID:	999
NCBI Accession:	NM_004360
Pathways:	WNT Signaling , Sensory Perception of Sound , Cell-Cell Junction Organization , Tube Formation

Application Details

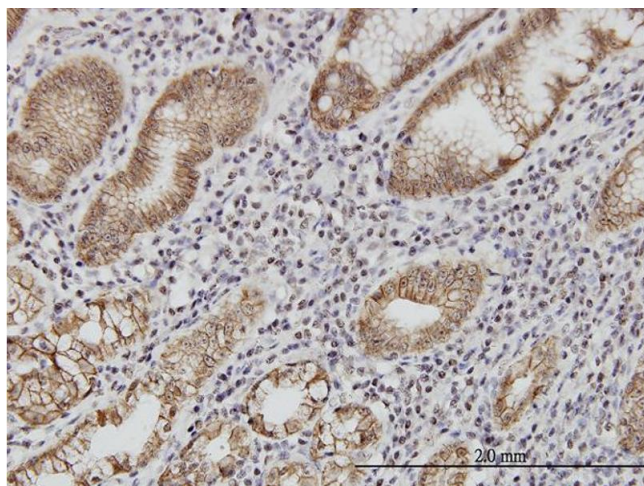
Application Notes:	Optimal working dilution should be determined by the investigator.
Restrictions:	For Research Use only

Handling

Buffer:	In 1x PBS, pH 7.4
Handling Advice:	Aliquot to avoid repeated freezing and thawing.
Storage:	-20 °C
Storage Comment:	Store at -20°C or lower. Aliquot to avoid repeated freezing and thawing.

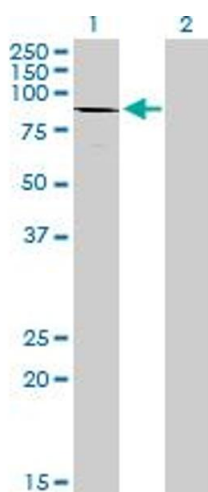
Publications

Product cited in:	Wen, Chen, Chen, Chuang, Yang, Chow: "Development of an AlphaLISA assay to quantify serum core-fucosylated E-cadherin as a metastatic lung adenocarcinoma biomarker." in: Journal of proteomics , Vol. 75, Issue 13, pp. 3963-76, (2012) (PubMed).
-------------------	---



Immunostaining

Image 1. Immunoperoxidase of monoclonal antibody to CDH1 on formalin-fixed paraffin-embedded human stomach. [antibody concentration 0.375 ug/ml]

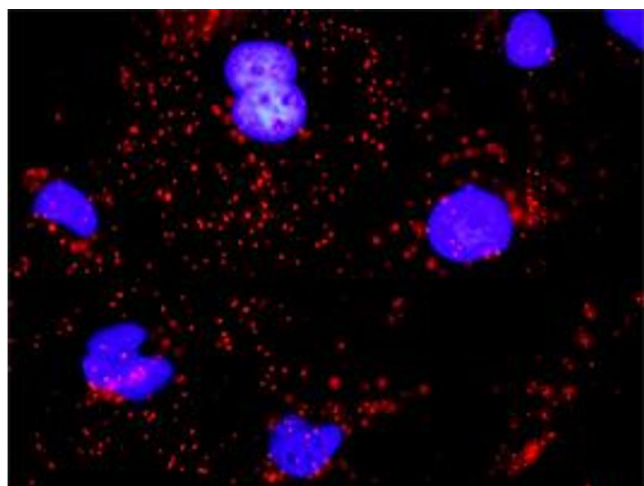


Western Blotting

Image 2. Western Blot analysis of CDH1 expression in transfected 293T cell line by CDH1 monoclonal antibody (M01), clone 3F4.

Lane 1: CDH1 transfected lysate(97.5 kDa).

Lane 2: Non-transfected lysate.



Proximity Ligation Assay

Image 3. Proximity Ligation Analysis of protein-protein interactions between EGFR and CDH1. HeLa cells were stained with anti-EGFR rabbit purified polyclonal 1:1200 and anti-CDH1 mouse monoclonal antibody 1:50. Each red dot represents the detection of protein-protein interaction complex, and nuclei were counterstained with DAPI (blue).

Please check the [product details page](#) for more images. Overall 6 images are available for ABIN560274.