

Datasheet for ABIN560279
anti-CDH6 antibody (AA 513-612)[Go to Product page](#)

3 Images

Overview

Quantity:	100 µg
Target:	CDH6
Binding Specificity:	AA 513-612
Reactivity:	Human
Host:	Mouse
Clonality:	Monoclonal
Conjugate:	This CDH6 antibody is un-conjugated
Application:	Western Blotting (WB), ELISA, RNA Interference (RNAi)

Product Details

Purpose:	Mouse monoclonal antibody raised against a partial recombinant CDH6.
Immunogen:	CDH6 (NP_004923, 513 a.a. ~ 612 a.a) partial recombinant protein with GST tag. MW of the GST tag alone is 26 KDa.
Sequence:	DKDDPYSGHQ FSFSLAPEAA SGSNFTIQDN KDNTAGILTR KNGYNRHEMS TYLLPVVISD NDYPVQSSTG TVTVRVACAD HHGNUMQSCHA EALIHPTGLS
Clone:	2F2
Isotype:	IgG1
Cross-Reactivity:	Human
Characteristics:	Antibody Reactive Against Recombinant Protein.

Target Details

Target:	CDH6
Alternative Name:	CDH6 (CDH6 Products)
Background:	Full Gene Name: cadherin 6, type 2, K-cadherin (fetal kidney) Synonyms: KCAD
Gene ID:	1004
NCBI Accession:	NM_004932
Pathways:	Cell-Cell Junction Organization

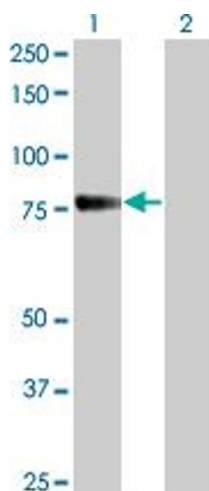
Application Details

Application Notes:	Optimal working dilution should be determined by the investigator.
Restrictions:	For Research Use only

Handling

Buffer:	In 1x PBS, pH 7.4
Handling Advice:	Aliquot to avoid repeated freezing and thawing.
Storage:	-20 °C
Storage Comment:	Store at -20°C or lower. Aliquot to avoid repeated freezing and thawing.

Images

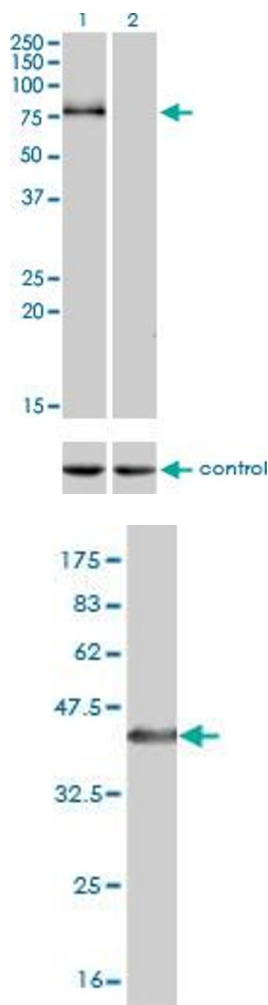


Western Blotting

Image 1. Western Blot analysis of CDH6 expression in transfected 293T cell line by CDH6 monoclonal antibody (M05), clone 2F2.

Lane 1: CDH6 transfected lysate(73.9 KDa).

Lane 2: Non-transfected lysate.



Western Blotting

Image 2. Western blot analysis of CDH6 over-expressed 293 cell line, cotransfected with CDH6 Validated Chimera RNAi (Lane 2) or non-transfected control (Lane 1). Blot probed with CDH6 monoclonal antibody (M05), clone 2F2. GAPDH (36.1 kDa) used as specificity and loading control.

Western Blotting

Image 3. Western Blot detection against Immunogen (36.74 kDa) .