



[Go to Product page](#)

Datasheet for ABIN560282

## anti-LI Cadherin antibody (AA 24-131)

### 1 Image

#### Overview

Quantity:	50 µL
Target:	LI Cadherin
Binding Specificity:	AA 24-131
Reactivity:	Human
Host:	Mouse
Clonality:	Polyclonal
Conjugate:	This LI Cadherin antibody is un-conjugated
Application:	Western Blotting (WB), ELISA

#### Product Details

Purpose:	Mouse polyclonal antibody raised against a partial recombinant CDH17.
Immunogen:	CDH17 (NP_004054, 24 a.a. ~ 131 a.a) partial recombinant protein with GST tag.
Sequence:	EGKFSGPLKP MTFSIYEGQE PSQIIFQFKA NPPAVTFELT GETDNIFVIE REGLLYYNRA LDRETRSTHN LQVAALDANG IIVEGVPVIT IEVKDINDNR PTFLLQSKY
Cross-Reactivity:	Human
Characteristics:	Antibody Reactive Against Recombinant Protein.

#### Target Details

Target:	LI Cadherin
Alternative Name:	CDH17 ( <a href="#">LI Cadherin Products</a> )

## Target Details

Background:	Full Gene Name: cadherin 17, LI cadherin (liver-intestine) Synonyms: CDH16,FLJ26931,HPT-1,HPT1,MGC138218,MGC142024
Gene ID:	1015
NCBI Accession:	<a href="#">NM_004063</a>

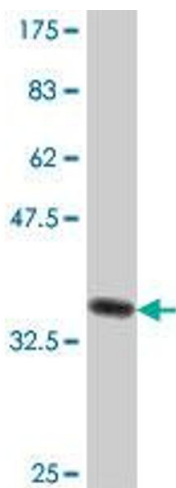
## Application Details

Application Notes:	Optimal working dilution should be determined by the investigator.
Restrictions:	For Research Use only

## Handling

Format:	Liquid
Buffer:	50 % glycerol
Handling Advice:	Aliquot to avoid repeated freezing and thawing.
Storage:	-20 °C
Storage Comment:	Store at -20°C or lower. Aliquot to avoid repeated freezing and thawing.

## Images



### Western Blotting

**Image 1.** Western Blot detection against Immunogen (37.99 kDa).