



Datasheet for ABIN560342  
**anti-CETP antibody (AA 1-493)**



[Go to Product page](#)

1 Image

Overview

|                      |                                     |
|----------------------|-------------------------------------|
| Quantity:            | 50 µL                               |
| Target:              | CETP                                |
| Binding Specificity: | AA 1-493                            |
| Reactivity:          | Human                               |
| Host:                | Mouse                               |
| Clonality:           | Polyclonal                          |
| Conjugate:           | This CETP antibody is un-conjugated |
| Application:         | Western Blotting (WB), ELISA        |

Product Details

|            |   |
|------------|---|
| Purpose:   | Mouse polyclonal antibody raised against a full-length recombinant CETP.  |
| Immunogen: | CETP (AAH25739.1, 1 a.a. ~ 493 a.a) full-length recombinant protein with GST tag.   |
| Sequence:  | MLAATVLTALA LLGNAHACSK GTSHEAGIVC RITKPALLVL NHETAKVIQT AFQRASYPDI<br>TGEKAMMLLG QVKYGLHNIQ ISHLSIASSQ VELVEAKSID VSIQNVSVVF KGTLKYGYTT<br>AWWLIGIQSI DFEIDSAIDL QINTQLTCDS GRVRTDAPDC YLSFHKLLH LQGEREPGWI<br>KQLFTNFISF TLKLVKGGI CKEINVISNI MADFVQTRAA SILSDGDIGV DISLTGDPVI<br>TASYLESHHK GHFIYKNVSE DLPLPTFSPT LLGDSRMLYF WFSERVFHSL AKVAFQDGRLL<br>MLSLMGDEFK AVLETWGFNT NQEIQEVVG GFPSQAQVTV HCLKMPKISC QNKGVVVNSS<br>VMVKFLFPRP DQQHSVAYTF EEDIVTTVQA SYSKKKLFLLS LLDQITPKT VSNL TESSSE<br>SIQSFLQSMI TAVGIPEVTS RLEVVF TALM NSKGVSLFDI INPEIITRDG FLLLQMDFGF<br>PEHLLVDFLQ SLS |

## Product Details

---

|                   |  |
|-------------------|--|
| Cross-Reactivity: | Human  |
| Characteristics:  | Antibody Reactive Against Recombinant Protein. |

## Target Details

---

|                   |   |
|-------------------|---|
| Target:           | CETP  |
| Alternative Name: | CETP ( <a href="#">CETP Products</a> )  |
| Background:       | Full Gene Name: cholesteryl ester transfer protein, plasma<br>Synonyms: HDLCQ10 |
| Gene ID:          | 1071  |

## Application Details

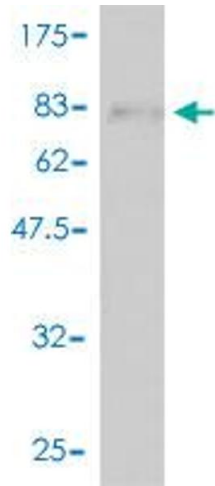
---

|                    |  |
|--------------------|--|
| Application Notes: | Optimal working dilution should be determined by the investigator. |
| Restrictions:      | For Research Use only  |

## Handling

---

|                  |  |
|------------------|--|
| Format:          | Liquid   |
| Buffer:          | 50 % glycerol  |
| Handling Advice: | Aliquot to avoid repeated freezing and thawing.                          |
| Storage:         | -20 °C   |
| Storage Comment: | Store at -20°C or lower. Aliquot to avoid repeated freezing and thawing. |



### Western Blotting

**Image 1.** Western Blot detection against Immunogen (80.34 KDa) .