



[Go to Product page](#)

Datasheet for ABIN560348
anti-CHAD antibody (AA 251-359)

2 Images

Overview

Quantity:	50 µL
Target:	CHAD
Binding Specificity:	AA 251-359
Reactivity:	Human
Host:	Mouse
Clonality:	Polyclonal
Conjugate:	This CHAD antibody is un-conjugated
Application:	ELISA, Western Blotting (WB)

Product Details

Purpose:	Mouse polyclonal antibody raised against a partial recombinant CHAD.
Immunogen:	CHAD (NP_001258, 251 a.a. ~ 359 a.a) partial recombinant protein with GST tag.
Sequence:	LDNTNLEKFS DGAFLGVTTL KHVHLENNRL NQLPSNFPFD SLETLALTNN PWKCTCQLRG LRRWLEAKAS RPDATCASPA KFKGQHIRT DAFRSCKFPT KRSKKAGRH
Cross-Reactivity:	Human
Characteristics:	Antibody Reactive Against Recombinant Protein.

Target Details

Target:	CHAD
Alternative Name:	CHAD (CHAD Products)

Target Details

Background: Full Gene Name: chondroadherin
Synonyms: SLRR4A

Gene ID: 1101

NCBI Accession: [NM_001267](#)

Application Details

Application Notes: Optimal working dilution should be determined by the investigator.

Restrictions: For Research Use only

Handling

Format: Liquid

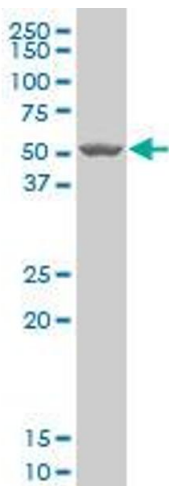
Buffer: 50 % glycerol

Handling Advice: Aliquot to avoid repeated freezing and thawing.

Storage: -20 °C

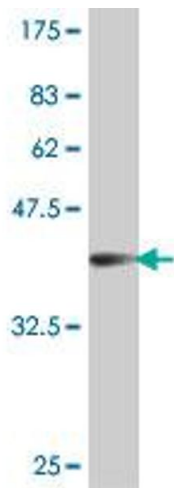
Storage Comment: Store at -20°C or lower. Aliquot to avoid repeated freezing and thawing.

Images



Western Blotting

Image 1. CHAD polyclonal antibody (A01), Lot # 060112JC01 Western Blot analysis of CHAD expression in SJCRH30 .



Western Blotting

Image 2. Western Blot detection against Immunogen (38.1 kDa).