



[Go to Product page](#)

Datasheet for ABIN560373
anti-CHRND antibody (AA 24-130)

3 Images

Overview

Quantity:	100 µg
Target:	CHRND
Binding Specificity:	AA 24-130
Reactivity:	Human
Host:	Mouse
Clonality:	Monoclonal
Conjugate:	This CHRND antibody is un-conjugated
Application:	Western Blotting (WB), ELISA

Product Details

Purpose:	Mouse monoclonal antibody raised against a partial recombinant CHRND.
Immunogen:	CHRND (NP_000742, 24 a.a. ~ 130 a.a) partial recombinant protein with GST tag. MW of the GST tag alone is 26 KDa.
Sequence:	EEERLIRHLF QEKGYNKELR PVAHKEESVD VALALTLSNL ISLKEVEETL TTNVWIEHW TDNRLKWNAE EFGNISVLRL PPDMMVWLPEI VLENNNDGSF QISYSCN
Clone:	2B2
Isotype:	IgG2a
Cross-Reactivity:	Human
Characteristics:	Antibody Reactive Against Recombinant Protein.

Target Details

Target:	CHRND
Alternative Name:	CHRND (CHRND Products)
Background:	Full Gene Name: cholinergic receptor, nicotinic, delta Synonyms: ACHRD,CMS2A,FCCMS,SCCMS
Gene ID:	1144
NCBI Accession:	NM_000751

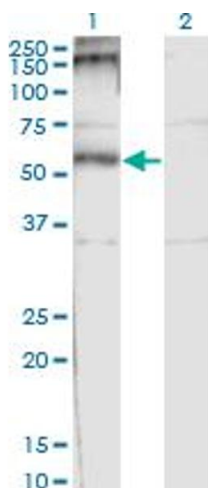
Application Details

Application Notes:	Optimal working dilution should be determined by the investigator.
Restrictions:	For Research Use only

Handling

Buffer:	In 1x PBS, pH 7.4
Handling Advice:	Aliquot to avoid repeated freezing and thawing.
Storage:	-20 °C
Storage Comment:	Store at -20°C or lower. Aliquot to avoid repeated freezing and thawing.

Images

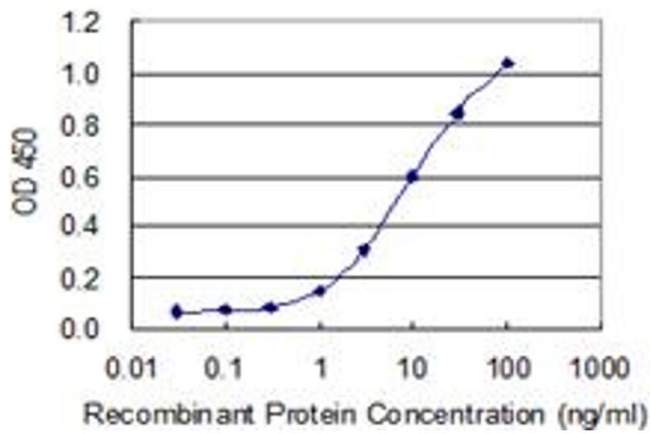


Western Blotting

Image 1. Western Blot analysis of CHRND expression in transfected 293T cell line by CHRND monoclonal antibody (M01), clone 2B2.

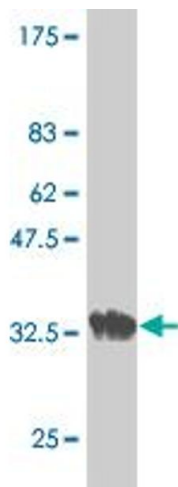
Lane 1: CHRND transfected lysate (Predicted MW: 58.9 kDa).

Lane 2: Non-transfected lysate.



ELISA

Image 2. Detection limit for recombinant GST tagged CHRND is 0.3 ng/ml as a capture antibody.



Western Blotting

Image 3. Western Blot detection against Immunogen (37.51 kDa).