



[Go to Product page](#)

Datasheet for ABIN560375
anti-CHRNE antibody (AA 21-130)

2 Images

Overview

Quantity:	100 µg
Target:	CHRNE
Binding Specificity:	AA 21-130
Reactivity:	Human
Host:	Mouse
Clonality:	Monoclonal
Conjugate:	This CHRNE antibody is un-conjugated
Application:	Western Blotting (WB), ELISA

Product Details

Purpose:	Mouse monoclonal antibody raised against a partial recombinant CHRNE.
Immunogen:	CHRNE (NP_000071, 21 a.a. ~ 130 a.a) partial recombinant protein with GST tag. MW of the GST tag alone is 26 KDa.
Sequence:	KNEELRLYHH LFNNYDPGSR PVREPEDTVT ISLKVTLTNL ISLNEKEETL TTSVWIGIDW QDYRLNYSKD DFGGIETLRV PSELVWLPEI VLENNIDGQF GVAYDANVLV
Clone:	6A2
Isotype:	IgG2a
Cross-Reactivity:	Human
Characteristics:	Antibody Reactive Against Recombinant Protein.

Target Details

Target:	CHRNE
Alternative Name:	CHRNE (CHRNE Products)
Background:	Full Gene Name: cholinergic receptor, nicotinic, epsilon Synonyms: ACHRE,CMS1D,CMS1E,CMS2A,FCCMS,SCCMS
Gene ID:	1145
NCBI Accession:	NM_000080

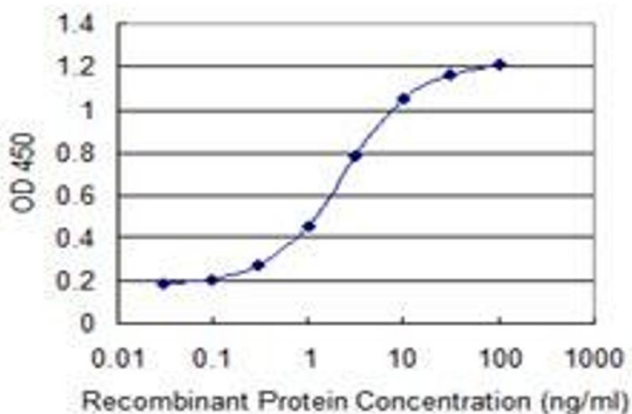
Application Details

Application Notes:	Optimal working dilution should be determined by the investigator.
Restrictions:	For Research Use only

Handling

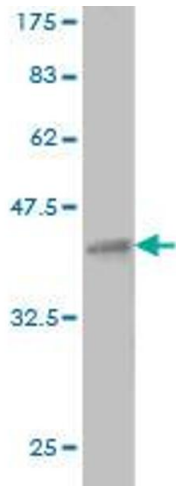
Buffer:	In 1x PBS, pH 7.4
Handling Advice:	Aliquot to avoid repeated freezing and thawing.
Storage:	-20 °C
Storage Comment:	Store at -20°C or lower. Aliquot to avoid repeated freezing and thawing.

Images



ELISA

Image 1. Detection limit for recombinant GST tagged CHRNE is 0.1 ng/ml as a capture antibody.



Western Blotting

Image 2. Western Blot detection against Immunogen (37.84 KDa).