

Datasheet for ABIN560393
anti-CKS2 antibody (AA 1-79)[Go to Product page](#)

4 Images

Overview

| | |
|----------------------|---|
| Quantity: | 100 µg |
| Target: | CKS2 |
| Binding Specificity: | AA 1-79 |
| Reactivity: | Human |
| Host: | Mouse |
| Clonality: | Monoclonal |
| Conjugate: | This CKS2 antibody is un-conjugated |
| Application: | ELISA, Western Blotting (WB), Immunofluorescence (IF) |

Product Details

| | |
|-------------------|---|
| Purpose: | Mouse monoclonal antibody raised against a full length recombinant CKS2. |
| Immunogen: | CKS2 (AAH06458, 1 a.a. ~ 79 a.a) full-length recombinant protein with GST tag. MW of the GST tag alone is 26 KDa. |
| Sequence: | MAHKQIYYSD KYFDEHYEYR HVMLPRELSK QVPKTHLMSE EEWRRLGVQQ SLGWVHYMIH EPEPHILLFR RPLPKDQQK |
| Clone: | 2H5-2C4 |
| Isotype: | IgG2b |
| Cross-Reactivity: | Human |
| Characteristics: | Antibody Reactive Against Recombinant Protein. |

Target Details

| | |
|-------------------|---|
| Target: | CKS2 |
| Alternative Name: | CKS2 (CKS2 Products) |
| Background: | Full Gene Name: CDC28 protein kinase regulatory subunit 2 Synonyms: CKSHS2 |
| Gene ID: | 1164 |

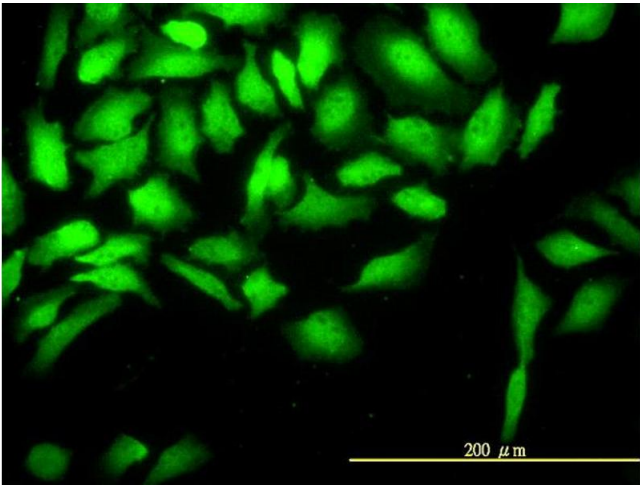
Application Details

| | |
|--------------------|--|
| Application Notes: | Optimal working dilution should be determined by the investigator. |
| Restrictions: | For Research Use only |

Handling

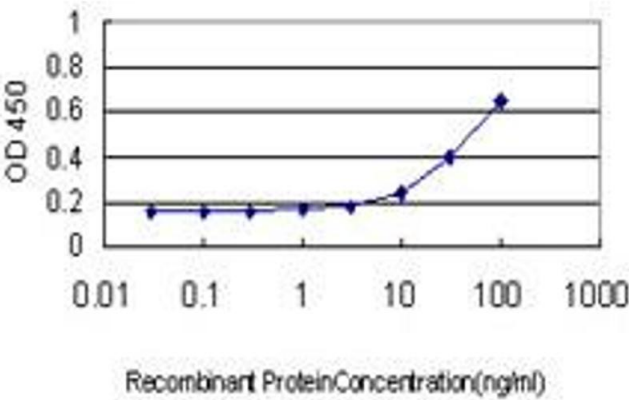
| | |
|------------------|--|
| Buffer: | In 1x PBS, pH 7.4 |
| Handling Advice: | Aliquot to avoid repeated freezing and thawing. |
| Storage: | -20 °C |
| Storage Comment: | Store at -20°C or lower. Aliquot to avoid repeated freezing and thawing. |

Images



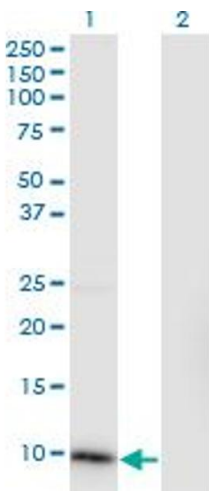
Immunofluorescence

Image 1. Immunofluorescence of monoclonal antibody to CKS2 on HeLa cell. [antibody concentration 10 ug/ml]



ELISA

Image 2. Detection limit for recombinant GST tagged CKS2 is approximately 3ng/ml as a capture antibody.



Western Blotting

Image 3. Western Blot analysis of CKS2 expression in transfected 293T cell line by CKS2 monoclonal antibody (M01), clone 2H5-2C4.

Lane 1: CKS2 transfected lysate(9.9 kDa).
Lane 2: Non-transfected lysate.

Please check the [product details page](#) for more images. Overall 4 images are available for ABIN560393.