



[Go to Product page](#)

Datasheet for ABIN560407

anti-CLK3 antibody (AA 36-136)

4 Images

Overview

Quantity:	100 µg
Target:	CLK3
Binding Specificity:	AA 36-136
Reactivity:	Human
Host:	Mouse
Clonality:	Monoclonal
Conjugate:	This CLK3 antibody is un-conjugated
Application:	Western Blotting (WB), ELISA, Immunohistochemistry (Paraffin-embedded Sections) (IHC (p))

Product Details

Purpose:	Mouse monoclonal antibody raised against a partial recombinant CLK3.
Immunogen:	CLK3 (AAH02555, 36 a.a. ~ 136 a.a) partial recombinant protein with GST tag. MW of the GST tag alone is 26 KDa.
Sequence:	YPSRREPPPR RSRSRSHDRL PYQRRYRERR DSDTYRCEER SPSFGEDYYG PSRSRHRRRS RERGPYRTRK HAHHCHKRRT RSCSSASSRS QQSSKRSSRS V
Clone:	1H2
Isotype:	IgG2b
Cross-Reactivity:	Human, Rat
Characteristics:	Antibody Reactive Against Recombinant Protein.

Target Details

Target:	CLK3
Alternative Name:	CLK3 (CLK3 Products)
Background:	Full Gene Name: CDC-like kinase 3 Synonyms: FLJ22858,PHCLK3,PHCLK3/152
Gene ID:	1198

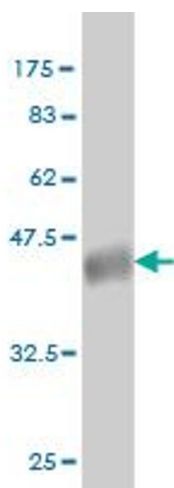
Application Details

Application Notes:	Optimal working dilution should be determined by the investigator.
Restrictions:	For Research Use only

Handling

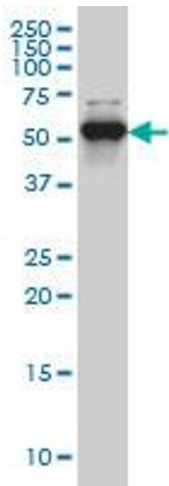
Buffer:	In 1x PBS, pH 7.4
Handling Advice:	Aliquot to avoid repeated freezing and thawing.
Storage:	-20 °C
Storage Comment:	Store at -20°C or lower. Aliquot to avoid repeated freezing and thawing.

Images



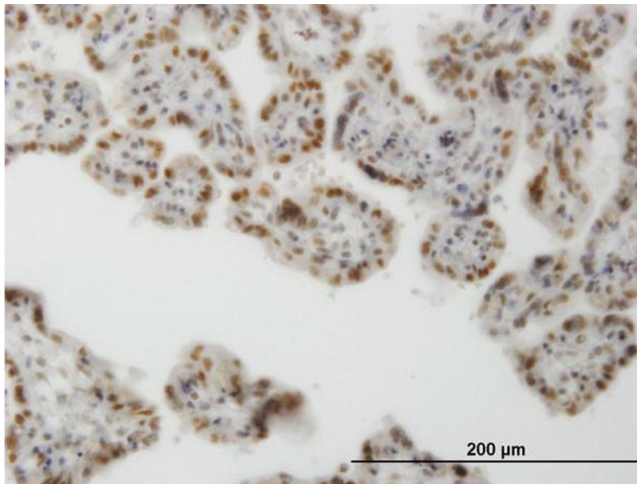
Western Blotting

Image 1. Western Blot detection against Immunogen (36.74 KDa) .



Western Blotting

Image 2. CLK3 monoclonal antibody (M01), clone 1H2
Western Blot analysis of CLK3 expression in HeLa S3 NE .



Immunostaining

Image 3. Immunoperoxidase of monoclonal antibody to
CLK3 on formalin-fixed paraffin-embedded human placenta.
[antibody concentration 0.2 ug/ml]

Please check the [product details page](#) for more images. Overall 4 images are available for ABIN560407.