

Datasheet for ABIN560412
anti-CLPS antibody (AA 23-112)[Go to Product page](#)

1 Image

Overview

Quantity:	50 µL
Target:	CLPS
Binding Specificity:	AA 23-112
Reactivity:	Human
Host:	Mouse
Clonality:	Polyclonal
Conjugate:	This CLPS antibody is un-conjugated
Application:	ELISA, Western Blotting (WB)

Product Details

Purpose:	Mouse polyclonal antibody raised against a partial recombinant CLPS.
Immunogen:	CLPS (NP_001823, 23 a.a. ~ 112 a.a) partial recombinant protein with GST tag.
Sequence:	GIINLENGE LCMNSAQCKS NCCQHSSALG LARCTSMASE NSECSVKTLY GIYYKPCER GLTCEGDKTI VGSITNTNFG ICHDAGRSKQ
Cross-Reactivity:	Human
Characteristics:	Antibody Reactive Against Recombinant Protein.

Target Details

Target:	CLPS
Alternative Name:	CLPS (CLPS Products)

Target Details

Background: Full Gene Name: colipase, pancreatic
Synonyms:

Gene ID: 1208

NCBI Accession: [NM_001832](#)

Pathways: [Lipid Metabolism](#)

Application Details

Application Notes: Optimal working dilution should be determined by the investigator.

Restrictions: For Research Use only

Handling

Format: Liquid

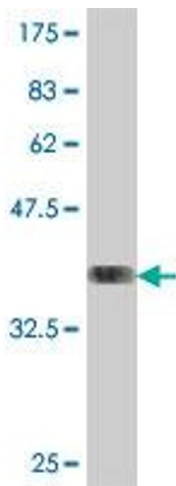
Buffer: 50 % glycerol

Handling Advice: Aliquot to avoid repeated freezing and thawing.

Storage: -20 °C

Storage Comment: Store at -20°C or lower. Aliquot to avoid repeated freezing and thawing.

Images



Western Blotting

Image 1. Western Blot detection against Immunogen (36.01 KDa) .