



[Go to Product page](#)

Datasheet for ABIN560415  
**anti-CLTB antibody (AA 1-211)**

6 Images

Overview

Quantity:	100 µg
Target:	CLTB
Binding Specificity:	AA 1-211
Reactivity:	Human
Host:	Mouse
Clonality:	Monoclonal
Conjugate:	This CLTB antibody is un-conjugated
Application:	Western Blotting (WB), ELISA, Immunofluorescence (IF), Immunohistochemistry (Paraffin-embedded Sections) (IHC (p))

Product Details

Purpose:	Mouse monoclonal antibody raised against a full length recombinant CLTB.
Immunogen:	CLTB (AAH06457, 1 a.a. ~ 211 a.a) full-length recombinant protein with GST tag. MW of the GST tag alone is 26 KDa.
Sequence:	MADDFGFFSS SESGAPEAAE EDPAAAFLAQ QESEIAGIEN DEGFGAPAGS HAAPAQPGPT SGAGSEDMGT TVNGDVFQEA NGPADGYAAI AQADRLTQEP ESIRKWREEQ RKRLQELDAA SKVTEQEWRE KAKKDLEEWN QRQSEQVEKN KINNRASEEA FVKESKEETP GTEWEKVAQL CDFNPKSSKQ CKDVSRLRSV LMSLKQTPLS R
Clone:	4B12-1E3
Isotype:	IgG2b
Cross-Reactivity:	Human

## Product Details

Characteristics: Antibody Reactive Against Recombinant Protein.

## Target Details

Target: CLTB

Alternative Name: CLTB (CLTB Products)

Background: Full Gene Name: clathrin, light chain (Lcb)  
Synonyms: LCB

Gene ID: 1212

Pathways: [Synaptic Membrane](#)

## Application Details

Application Notes: Optimal working dilution should be determined by the investigator.

Restrictions: For Research Use only

## Handling

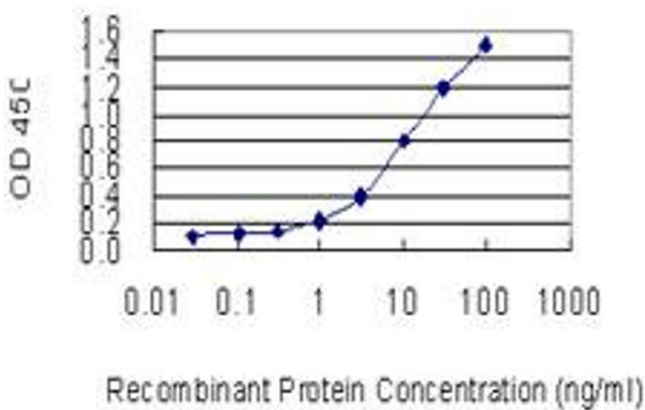
Buffer: In 1x PBS, pH 7.4

Handling Advice: Aliquot to avoid repeated freezing and thawing.

Storage: -20 °C

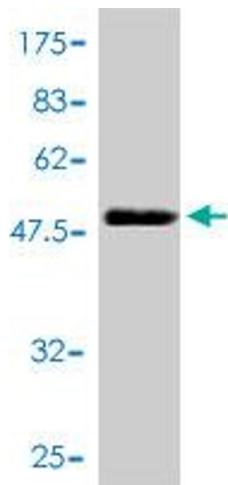
Storage Comment: Store at -20°C or lower. Aliquot to avoid repeated freezing and thawing.

## Images



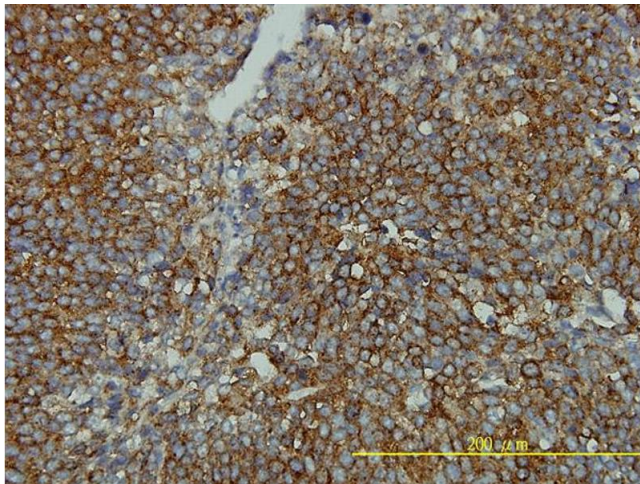
### ELISA

**Image 1.** Detection limit for recombinant GST tagged CLTB is 0.1 ng/ml as a capture antibody.



### Western Blotting

**Image 2.** Western Blot detection against Immunogen (48.95 KDa).



### Immunostaining

**Image 3.** Immunoperoxidase of monoclonal antibody to CLTB on formalin-fixed paraffin-embedded human transitional cell carcinoma tissue. [antibody concentration 2 ug/ml]

Please check the [product details page](#) for more images. Overall 6 images are available for ABIN560415.