



[Go to Product page](#)

Datasheet for ABIN560427  
**anti-COL6A2 antibody (AA 1-425)**

1 Image

Overview

Quantity:	50 µL
Target:	COL6A2
Binding Specificity:	AA 1-425
Reactivity:	Human
Host:	Mouse
Clonality:	Polyclonal
Conjugate:	This COL6A2 antibody is un-conjugated
Application:	Western Blotting (WB), ELISA

Product Details

Purpose:	Mouse polyclonal antibody raised against a full-length recombinant COL6A2.
Immunogen:	COL6A2 (AAH02484, 1 a.a. ~ 425 a.a) full-length recombinant protein with GST tag.
Sequence:	MTYVRETCGC CDCEKRCGAL DVVFVDSSE SIGYTNFTLE KNFVINNVNR LGAIKDPKS ETGTRVGVVQ YSHEGTFEAI QLDDEHIDSL SSFKEAVKNL EWIAGGTWTP SALKFAYDRL IKESRRQKTR VFAVVITDGR HDPRDDDLNL RALCDRDVTV TAIGIGDMFH EKHESENLYS IACDKPQQVR NMTLFSDLVA EKFIIDMEDV LCPDPQIVCP DLPCQTELSV AQCTQRPVDI VFLLDGSERL GEQNFHKARR FVEQVARRLT LARRDDDPLN ARVALLQFGG PGEQQVAFPL SHNLTAIHEA LETTQYLNFS SHVGAGVVHA INAIVRSPRG GARRHAELSF VFLTDGVTGN DSLHESAHSR RKQNVVPTVL ALGSDVDM DV LTTLSLGDRA AVFHEKDYDS LAQPGFFDRF IRWIC
Cross-Reactivity:	Human
Characteristics:	Antibody Reactive Against Recombinant Protein.

## Target Details

Target:	COL6A2
Alternative Name:	COL6A2 ( <a href="#">COL6A2 Products</a> )
Background:	Full Gene Name: collagen, type VI, alpha 2 Synonyms: DKFZp586E1322,FLJ46862,PP3610
Gene ID:	1292

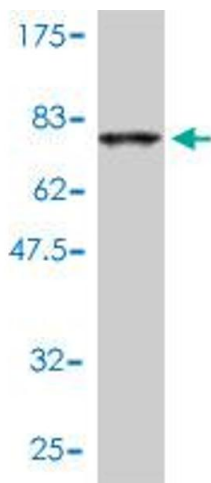
## Application Details

Application Notes:	Optimal working dilution should be determined by the investigator.
Restrictions:	For Research Use only

## Handling

Format:	Liquid
Buffer:	50 % glycerol
Handling Advice:	Aliquot to avoid repeated freezing and thawing.
Storage:	-20 °C
Storage Comment:	Store at -20°C or lower. Aliquot to avoid repeated freezing and thawing.

## Images



### Western Blotting

**Image 1.** Western Blot detection against Immunogen (72.86 KDa) .