



[Go to Product page](#)

Datasheet for ABIN560428
anti-COL6A2 antibody (AA 1-425)

2 Images

Overview

Quantity:	100 µg
Target:	COL6A2
Binding Specificity:	AA 1-425
Reactivity:	Human
Host:	Mouse
Clonality:	Monoclonal
Conjugate:	This COL6A2 antibody is un-conjugated
Application:	Western Blotting (WB), ELISA

Product Details

Purpose:	Mouse monoclonal antibody raised against a full length recombinant COL6A2.
Immunogen:	COL6A2 (AAH02484, 1 a.a. ~ 425 a.a) full-length recombinant protein with GST tag. MW of the GST tag alone is 26 KDa.
Sequence:	MTYVRETCGC CDCEKRCGAL DVVFVIDSSE SIGYTNFTLE KNFVINVVNR LGAIKDPKS ETGTRVGVVQ YSHEGTFEAI QLDDEHIDSL SSFKEAVKNL EWIAGGTWTP SALKFAYDRL IKESRRQKTR VFAVITDGR HDPRDDDLNL RALCDRDVTV TAIGIGDMFH EKHESENLYS IACDKPQQVR NMTLFSDLVA EKFIDDMEDV LCPDPQIVCP DLPCQTELSV AQCTQRPVDI VFLLDGSERL GEQNFHKARR FVEQVARRLT LARRDDPLN ARVALLQFGG PGEQQVAFPL SHNLTAIHEA LETTQYLNSF SHVGAGVVHA INAVRSPRG GARRHAELSF VFLTGDGVTGN DSLHESAHSR RKQNVVPTVL ALGSDVDM DV LTTLSLGDR AAVFHEKDYDS LAQPGFFDRF IRWIC
Clone:	2C5-F2

Product Details

Isotype:	IgG2a
Cross-Reactivity:	Human
Characteristics:	Antibody Reactive Against Recombinant Protein.

Target Details

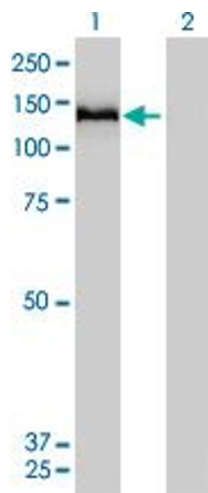
Target:	COL6A2
Alternative Name:	COL6A2 (COL6A2 Products)
Background:	Full Gene Name: collagen, type VI, alpha 2 Synonyms: DKFZp586E1322,FLJ46862,PP3610
Gene ID:	1292

Application Details

Application Notes:	Optimal working dilution should be determined by the investigator.
Restrictions:	For Research Use only

Handling

Buffer:	In 1x PBS, pH 7.4
Handling Advice:	Aliquot to avoid repeated freezing and thawing.
Storage:	-20 °C
Storage Comment:	Store at -20°C or lower. Aliquot to avoid repeated freezing and thawing.

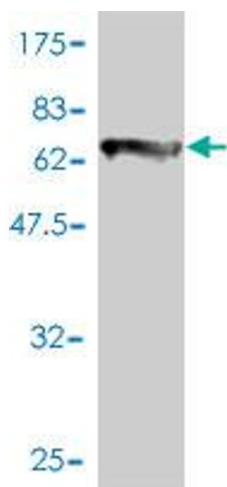


Western Blotting

Image 1. Western Blot analysis of COL6A2 expression in transfected 293T cell line by COL6A2 monoclonal antibody (M01), clone 2C5-F2.

Lane 1: COL6A2 transfected lysate(109 KDa).

Lane 2: Non-transfected lysate.



Western Blotting

Image 2. Western Blot detection against Immunogen (72.49 KDa) .