

Datasheet for ABIN560445  
**anti-COX6C antibody (AA 1-75)**

## 3 Images

[Go to Product page](#)

## Overview

Quantity:	100 µg
Target:	COX6C
Binding Specificity:	AA 1-75
Reactivity:	Human
Host:	Mouse
Clonality:	Monoclonal
Conjugate:	This COX6C antibody is un-conjugated
Application:	Western Blotting (WB), ELISA, Immunofluorescence (IF), Immunohistochemistry (Paraffin-embedded Sections) (IHC (p))

## Product Details

Purpose:	Mouse monoclonal antibody raised against a full length recombinant COX6C.
Immunogen:	COX6C (AAH00187, 1 a.a. ~ 75 a.a) full-length recombinant protein with GST tag. MW of the GST tag alone is 26 KDa.
Sequence:	MAPEVLPKPR MRGLLARRLR NHMAVAFVLS LGVAALYKFR VADQRKKAYA DFYRNYDVMK DFEEMRKAGI FQSVK
Clone:	4G4-2A8
Isotype:	IgG1
Cross-Reactivity:	Human
Characteristics:	Antibody Reactive Against Recombinant Protein.

## Target Details

Target:	COX6C
Alternative Name:	COX6C ( <a href="#">COX6C Products</a> )
Background:	Full Gene Name: cytochrome c oxidase subunit VIc Synonyms:
Gene ID:	1345
Pathways:	<a href="#">Proton Transport</a>

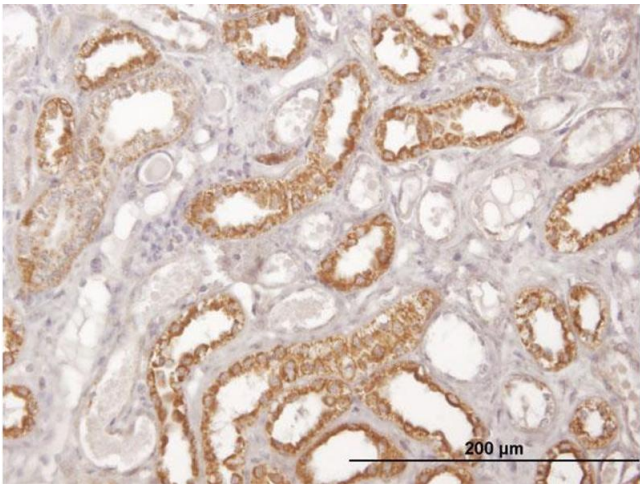
## Application Details

Application Notes:	Optimal working dilution should be determined by the investigator.
Restrictions:	For Research Use only

## Handling

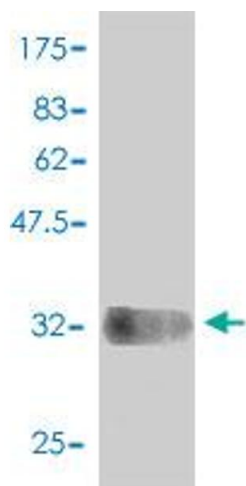
Buffer:	In 1x PBS, pH 7.4
Handling Advice:	Aliquot to avoid repeated freezing and thawing.
Storage:	-20 °C
Storage Comment:	Store at -20°C or lower. Aliquot to avoid repeated freezing and thawing.

## Images



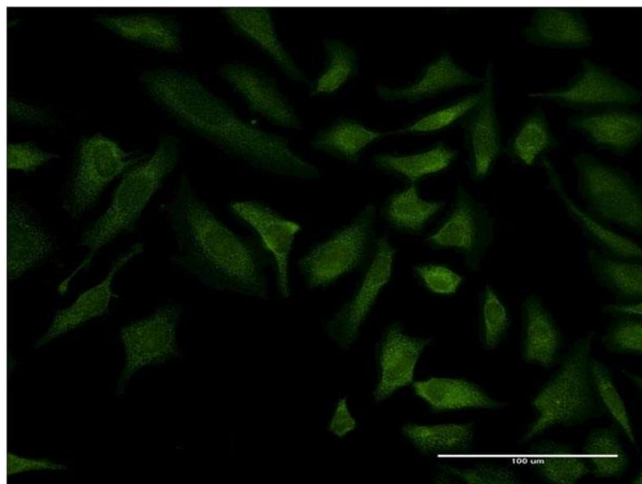
### Immunostaining

**Image 1.** Immunoperoxidase of monoclonal antibody to COX6C on formalin-fixed paraffin-embedded human kidney. [antibody concentration 3 ug/ml]



#### Western Blotting

**Image 2.** Western Blot detection against Immunogen (33.99 kDa) .



#### Immunofluorescence

**Image 3.** Immunofluorescence of monoclonal antibody to COX6C on HeLa cell. [antibody concentration 10 ug/ml]