

Datasheet for ABIN560455  
**anti-CPS1 antibody (AA 1400-1500)**

4 Images

1 Publication

[Go to Product page](#)

## Overview

Quantity:	100 µg
Target:	CPS1
Binding Specificity:	AA 1400-1500
Reactivity:	Human
Host:	Mouse
Clonality:	Monoclonal
Conjugate:	This CPS1 antibody is un-conjugated
Application:	Western Blotting (WB), ELISA, Immunohistochemistry (Paraffin-embedded Sections) (IHC (p))

## Product Details

Purpose:	Mouse monoclonal antibody raised against a partial recombinant CPS1.
Immunogen:	CPS1 (NP_001866, 1400 a.a. ~ 1500 a.a) partial recombinant protein with GST tag. MW of the GST tag alone is 26 KDa.
Sequence:	ANNVPATPVA WPSQEGQNPS LSSIRKLIRD GSIDLVINLP NNNTKFVHDN YVIRRTAVDS GIPLLTNFQV TKLFAEAVQK SRKVDSKSLF HYRQYSAGKA A
Clone:	8H8
Isotype:	IgG1
Cross-Reactivity:	Human
Characteristics:	Antibody Reactive Against Recombinant Protein.

## Target Details

Target:	CPS1
Alternative Name:	CPS1 ( <a href="#">CPS1 Products</a> )
Background:	Full Gene Name: carbamoyl-phosphate synthetase 1, mitochondrial Synonyms:
Gene ID:	1373
NCBI Accession:	<a href="#">NM_001875</a>
Pathways:	<a href="#">Response to Growth Hormone Stimulus</a> , <a href="#">Cellular Glucan Metabolic Process</a>

## Application Details

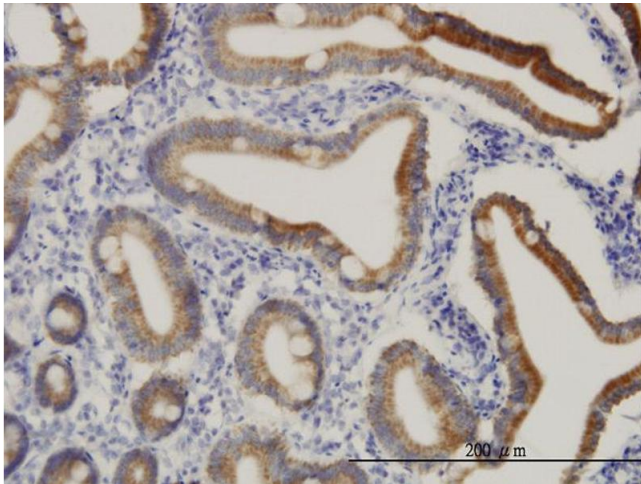
Application Notes:	Optimal working dilution should be determined by the investigator.
Restrictions:	For Research Use only

## Handling

Buffer:	In 1x PBS, pH 7.4
Handling Advice:	Aliquot to avoid repeated freezing and thawing.
Storage:	-20 °C
Storage Comment:	Store at -20°C or lower. Aliquot to avoid repeated freezing and thawing.

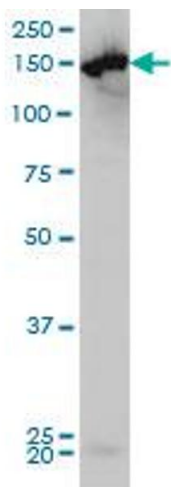
## Publications

Product cited in:	Lee, Jee, Kwon, Yoon, Xu, Wang, Wang, Thorgeirsson, Lee, Woo, Yoon: "Identification of a mitochondrial defect gene signature reveals NUPR1 as a key regulator of liver cancer progression." in: <b>Hepatology (Baltimore, Md.)</b> , Vol. 62, Issue 4, pp. 1174-89, (2015) ( <a href="#">PubMed</a> ).
-------------------	--



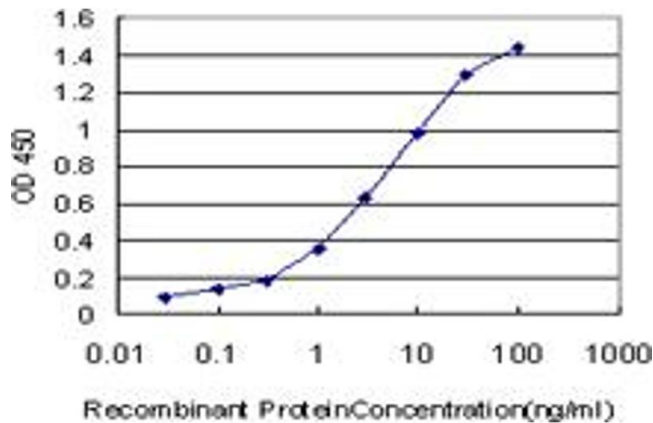
### Immunostaining

**Image 1.** Immunoperoxidase of monoclonal antibody to CPS1 on formalin-fixed paraffin-embedded human small Intestine. [antibody concentration 3 ug/ml]



### Western Blotting

**Image 2.** CPS1 monoclonal antibody (M01), clone 8H8 Western Blot analysis of CPS1 expression in HeLa .



### ELISA

**Image 3.** Detection limit for recombinant GST tagged CPS1 is approximately 0.03ng/ml as a capture antibody.

Please check the [product details page](#) for more images. Overall 4 images are available for ABIN560455.