

Datasheet for ABIN560465
anti-CBP antibody (AA 951-1050)



[Go to Product page](#)

4 Images

Overview

Quantity:	100 µg
Target:	CBP (CREBBP)
Binding Specificity:	AA 951-1050
Reactivity:	Human
Host:	Mouse
Clonality:	Monoclonal
Conjugate:	This CBP antibody is un-conjugated
Application:	Western Blotting (WB), ELISA, Immunofluorescence (IF), Proximity Ligation Assay (PLA)

Product Details

Purpose:	Mouse monoclonal antibody raised against a partial recombinant CREBBP.
Immunogen:	CREBBP (NP_004371, 951 a.a. ~ 1050 a.a) partial recombinant protein with GST tag. MW of the GST tag alone is 26 KDa.
Sequence:	PVHAQPPGTP LSQAAASIDN RVPTPSSVAS AETNSQQPGP DVPVLEMKTE TQAEDTEPDP GESKGEPRSE MMEEDLQGAS QVKEETDIAE QKSEPMEVDE
Clone:	2H5
Isotype:	IgG1
Cross-Reactivity:	Human
Characteristics:	Antibody Reactive Against Recombinant Protein.

Target Details

Target:	CBP (CREBBP)
Alternative Name:	CREBBP (CREBBP Products)
Background:	Full Gene Name: CREB binding protein Synonyms: CBP,KAT3A,RSTS
Gene ID:	1387
NCBI Accession:	NM_004380
Pathways:	TCR Signaling , Interferon-gamma Pathway , Stem Cell Maintenance , Chromatin Binding , Regulation of Lipid Metabolism by PPARalpha

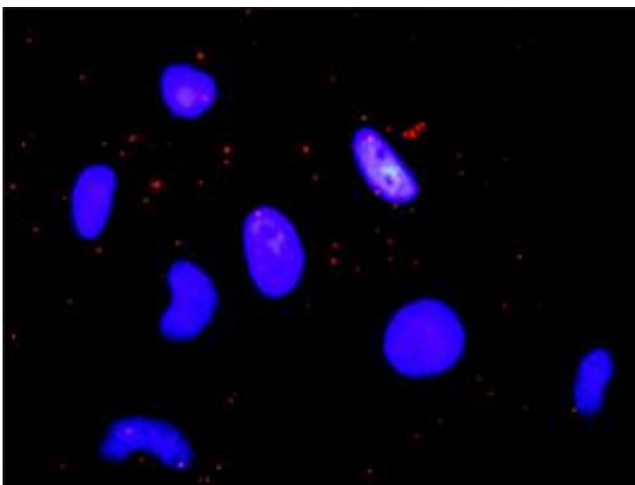
Application Details

Application Notes:	Optimal working dilution should be determined by the investigator.
Restrictions:	For Research Use only

Handling

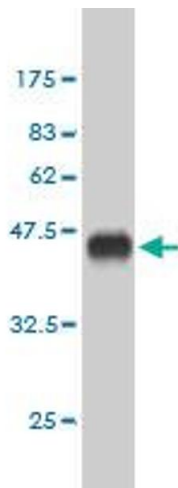
Buffer:	In 1x PBS, pH 7.4
Handling Advice:	Aliquot to avoid repeated freezing and thawing.
Storage:	-20 °C
Storage Comment:	Store at -20°C or lower. Aliquot to avoid repeated freezing and thawing.

Images



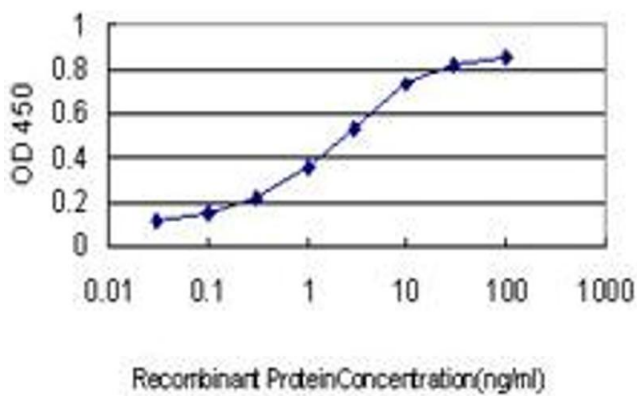
Proximity Ligation Assay

Image 1. Proximity Ligation Analysis of protein-protein interactions between FGFR1 and CREBBP. HeLa cells were stained with anti-FGFR1 rabbit purified polyclonal 1:1200 and anti-CREBBP mouse monoclonal antibody 1:50. Each red dot represents the detection of protein-protein interaction complex, and nuclei were counterstained with DAPI (blue).



Western Blotting

Image 2. Western Blot detection against Immunogen (36.74 KDa).



ELISA

Image 3. Detection limit for recombinant GST tagged CREBBP is approximately 0.03ng/ml as a capture antibody.

Please check the [product details page](#) for more images. Overall 4 images are available for ABIN560465.