



[Go to Product page](#)

Datasheet for ABIN560467  
**anti-CREM antibody (AA 201-300)**

1 Image

Overview

Quantity:	50 µL
Target:	CREM
Binding Specificity:	AA 201-300
Reactivity:	Human
Host:	Mouse
Clonality:	Polyclonal
Conjugate:	This CREM antibody is un-conjugated
Application:	Western Blotting (WB), ELISA

Product Details

Purpose:	Mouse polyclonal antibody raised against a partial recombinant CREM.
Immunogen:	CREM (NP_853549, 201 a.a. ~ 300 a.a) partial recombinant protein with GST tag.
Sequence:	ATGDMPTYQI RAPTAAALPQG VVMAASPGSL HSPQQLAEEA TRKRELRLMK NREAAKECRR RKKEYVKCLE SRVAVLEVQN KKLIEELET L KDICSPKTDY
Cross-Reactivity:	Human
Characteristics:	Antibody Reactive Against Recombinant Protein.

Target Details

Target:	CREM
Alternative Name:	CREM ( <a href="#">CREM Products</a> )

## Target Details

Background:	Full Gene Name: cAMP responsive element modulator Synonyms: ICER,MGC111110,MGC17881,MGC41893,hCREM-2
Gene ID:	1390
NCBI Accession:	<a href="#">NM_181571</a>
Pathways:	<a href="#">Retinoic Acid Receptor Signaling Pathway</a>

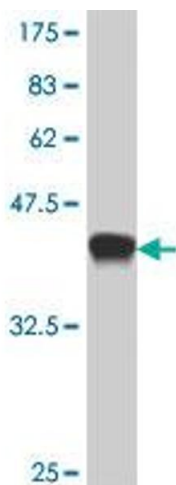
## Application Details

Application Notes:	Optimal working dilution should be determined by the investigator.
Restrictions:	For Research Use only

## Handling

Format:	Liquid
Buffer:	50 % glycerol
Handling Advice:	Aliquot to avoid repeated freezing and thawing.
Storage:	-20 °C
Storage Comment:	Store at -20°C or lower. Aliquot to avoid repeated freezing and thawing.

## Images



### Western Blotting

**Image 1.** Western Blot detection against Immunogen (37.11 kDa).