



Datasheet for ABIN560470  
**anti-CrKL antibody (AA 204-303)**



[Go to Product page](#)

1 Image

Overview

Quantity:	50 µL
Target:	CrKL (CRKL)
Binding Specificity:	AA 204-303
Reactivity:	Human
Host:	Mouse
Clonality:	Polyclonal
Conjugate:	This CrKL antibody is un-conjugated
Application:	Western Blotting (WB), ELISA

Product Details

Purpose:	Mouse polyclonal antibody raised against a partial recombinant CRKL.
Immunogen:	CRKL (NP_005198, 204 a.a. ~ 303 a.a) partial recombinant protein with GST tag.
Sequence:	AHAYAQPQTT TPLPAVSGSP GAAITPLPST QNGPVFAKAI QKRVPCAYDK TALALEVGDI VKVTRMNING QWEGEVNGRK GLFPFTHVKI FDPQNPDENE
Cross-Reactivity:	Human
Characteristics:	Antibody Reactive Against Recombinant Protein.

Target Details

Target:	CrKL (CRKL)
Alternative Name:	CRKL ( <a href="#">CRKL Products</a> )

## Target Details

Background:	Full Gene Name: v-crk sarcoma virus CT10 oncogene homolog (avian)-like Synonyms:
Gene ID:	1399
NCBI Accession:	<a href="#">NM_005207</a>
Pathways:	<a href="#">Interferon-gamma Pathway</a> , <a href="#">Neurotrophin Signaling Pathway</a> , <a href="#">Signaling of Hepatocyte Growth Factor Receptor</a>

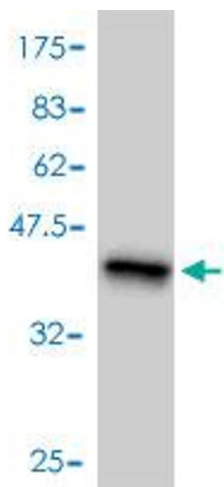
## Application Details

Application Notes:	Optimal working dilution should be determined by the investigator.
Restrictions:	For Research Use only

## Handling

Format:	Liquid
Buffer:	50 % glycerol
Handling Advice:	Aliquot to avoid repeated freezing and thawing.
Storage:	-20 °C
Storage Comment:	Store at -20°C or lower. Aliquot to avoid repeated freezing and thawing.

## Images



### Western Blotting

**Image 1.** Western Blot detection against Immunogen (37.11 kDa).