

Datasheet for ABIN560474
anti-CRY1 antibody (AA 1-586)



[Go to Product page](#)

5 Images

Overview

Quantity:	100 µg
Target:	CRY1
Binding Specificity:	AA 1-586
Reactivity:	Human
Host:	Mouse
Clonality:	Monoclonal
Conjugate:	This CRY1 antibody is un-conjugated
Application:	Western Blotting (WB), ELISA, Immunohistochemistry (Paraffin-embedded Sections) (IHC (p)), Immunofluorescence (IF)

Product Details

Purpose:	Mouse monoclonal antibody raised against a full length recombinant CRY1.
Immunogen:	CRY1 (AAH30519, 1 a.a. ~ 586 a.a) full-length recombinant protein with GST tag. MW of the GST tag alone is 26 KDa.
Sequence:	<p>MGVNAVHWFR KGLRLHDNPA LKECIQGADT IRCVYILDPW FAGSSNVGIN RWRFLQCLE DLNANLRKLN SRLFVIRGQP ADVFPRLFKE WNITKLSIEY DSEPFGERD AAIKKLATEA GVEVIVRISH TLYDLDKIIE LNGGQPPLTY KRFQTLISKM EPLEIPVETI TSEVIEKCTT PLSDDHDEKY GVPSLEELGF DTDGLSSAVW PGGETEALTR LERHLERKAW VANFERPRMN ANLLASPTG LSPYLRFGCL SCRLFYFKLT DLYKKVKKNS SPPLSLYGQL LWREFFYTAA TNNPRFDKME GNPICVQIPW DKNPEALAKW AEGRTGFPWI DAIMTQLRQE GWIHHLARHA VACFLTRGDL WISWEEGMKV FEELLLDADW SINAGSWMWL SCSSFFQQFF HCYCVPVGFGR RTDPNGDYIR RYLPVLRGFP AKYIYDPWNA PEGIQKVAKC LIGVNYPKPM VNHAESRLN IERMKQIYQQ</p>

Product Details

LSRYRGLGLL ASVPSNPNGN GGFMGYSAEN IPGCSSSGSC SQGSGILHYA HGDSQQTHLL
KQGRSSMGTG LSGGKRPSQE EDTQSIGPKV QRQSTN

Clone:	4H4-1C4
Isotype:	IgG1
Cross-Reactivity:	Human
Characteristics:	Antibody Reactive Against Recombinant Protein.

Target Details

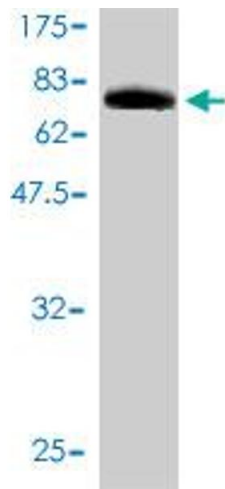
Target:	CRY1
Alternative Name:	CRY1 (CRY1 Products)
Background:	Full Gene Name: cryptochrome 1 (photolyase-like) Synonyms: PHLL1
Gene ID:	1407
Pathways:	Response to Water Deprivation, Proton Transport

Application Details

Application Notes:	Optimal working dilution should be determined by the investigator.
Restrictions:	For Research Use only

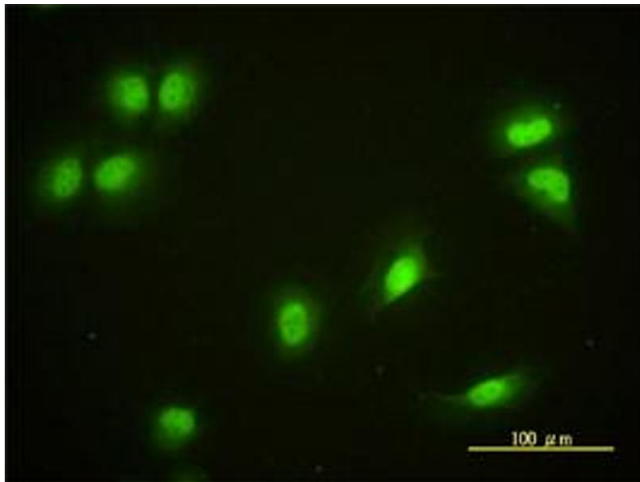
Handling

Buffer:	In 1x PBS, pH 7.4
Handling Advice:	Aliquot to avoid repeated freezing and thawing.
Storage:	-20 °C
Storage Comment:	Store at -20°C or lower. Aliquot to avoid repeated freezing and thawing.



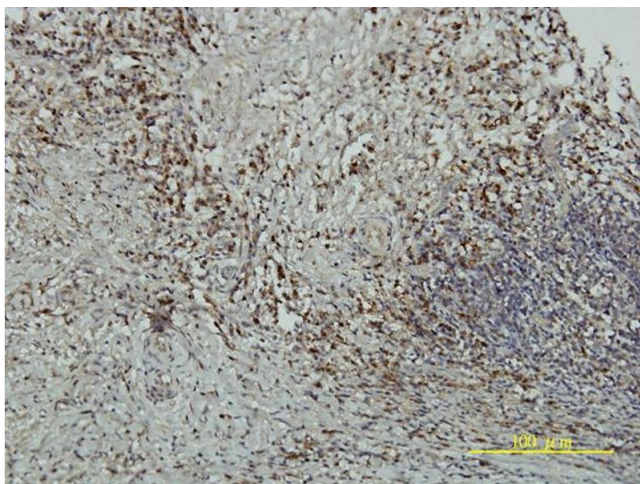
Western Blotting

Image 1. Western Blot detection against Immunogen (90.2 KDa) .



Immunofluorescence

Image 2. Immunofluorescence of monoclonal antibody to CRY1 on HeLa cell. (antibody concentration 10 μg/mL)



Immunostaining

Image 3. Immunoperoxidase of monoclonal antibody to CRY1 on formalin-fixed paraffin-embedded human colon adenocarcinoma tissue. [antibody concentration 5 μg/ml]

Please check the [product details page](#) for more images. Overall 5 images are available for ABIN560474.