



[Go to Product page](#)

Datasheet for ABIN560494

anti-Exportin 2 antibody (AA 872-971)

6 Images

11 Publications

Overview

Quantity:	100 µg
Target:	Exportin 2 (CSE1L)
Binding Specificity:	AA 872-971
Reactivity:	Human
Host:	Mouse
Clonality:	Monoclonal
Conjugate:	This Exportin 2 antibody is un-conjugated
Application:	Western Blotting (WB), ELISA, Immunofluorescence (IF), Immunohistochemistry (Paraffin-embedded Sections) (IHC (p))

Product Details

Purpose:	Mouse monoclonal antibody raised against a partial recombinant CSE1L.
Immunogen:	CSE1L (NP_001307, 872 a.a. ~ 971 a.a) partial recombinant protein with GST tag. MW of the GST tag alone is 26 KDa.
Sequence:	LIGLFELPED DTIPDEEHFI DIEDTPGYQT AFSQLAFAGK KEHDPVGQMV NNPKIHLAQS LHKLSTACPG RVPSMVSTSL NAEALQYLQG YLQAARVTLL
Clone:	3D8
Isotype:	IgG1
Cross-Reactivity:	Human
Characteristics:	Antibody Reactive Against Recombinant Protein.

Target Details

Target:	Exportin 2 (CSE1L)
Alternative Name:	CSE1L (CSE1L Products)
Background:	Full Gene Name: CSE1 chromosome segregation 1-like (yeast) Synonyms: CAS,CSE1,MGC117283,MGC130036,MGC130037,XPO2
Gene ID:	1434
NCBI Accession:	NM_001316
Pathways:	Protein targeting to Nucleus

Application Details

Application Notes:	Optimal working dilution should be determined by the investigator.
Restrictions:	For Research Use only

Handling

Buffer:	In 1x PBS, pH 7.4
Handling Advice:	Aliquot to avoid repeated freezing and thawing.
Storage:	-20 °C
Storage Comment:	Store at -20°C or lower. Aliquot to avoid repeated freezing and thawing.

Publications

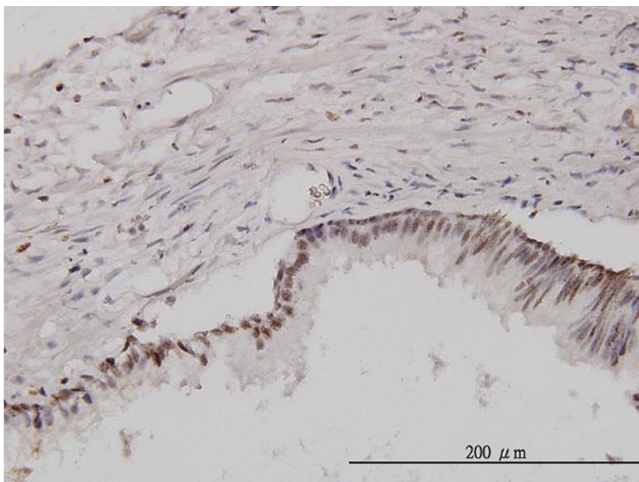
Product cited in:	<p>Luo, Qu, Kan, Cai: "The microRNA-451a/chromosome segregation 1-like axis suppresses cell proliferation, migration, and invasion and induces apoptosis in nasopharyngeal carcinoma." in: Bioengineered, Vol. 12, Issue 1, pp. 6967-6980, (2021) (PubMed).</p> <p>Chin, Wu, Shih, Yeh, Lee, Shen, Yeh, Jiang, Tseng: "High expression of cytoplasmic phosphorylated CSE1L in malignant melanoma but not in benign nevi: phosphorylated CSE1L for the discrimination between melanoma and benign nevi." in: International journal of clinical and experimental pathology, Vol. 8, Issue 2, pp. 1393-401, (2015) (PubMed).</p> <p>Lee, Shen, Shih, Chou, Tseng, Chin, Liu, Chen, Jiang: "Early decline in serum phospho-CSE1L levels in vemurafenib/sunitinib-treated melanoma and sorafenib/lapatinib-treated colorectal tumor xenografts." in: Journal of translational medicine, Vol. 13, pp. 191, (2015) (PubMed).</p>
-------------------	--

Okimoto, Sun, Fukuto, Horikoshi, Matsuda, Matsuda, Ikura, Ikura, Machida, Kurumizaka, Miyamoto, Oka, Yoneda, Kiuchi, Tashiro: "hCAS/CSE1L regulates RAD51 distribution and focus formation for homologous recombinational repair." in: **Genes to cells : devoted to molecular & cellular mechanisms**, Vol. 20, Issue 9, pp. 681-94, (2015) ([PubMed](#)).

Li, Yang, Pang, Chan, Zhou, Mao, Wang, Lau, Poon, Shi, Ng: "MIR-137 suppresses growth and invasion, is downregulated in oligodendroglial tumors and targets CSE1L." in: **Brain pathology (Zurich, Switzerland)**, Vol. 23, Issue 4, pp. 426-39, (2013) ([PubMed](#)).

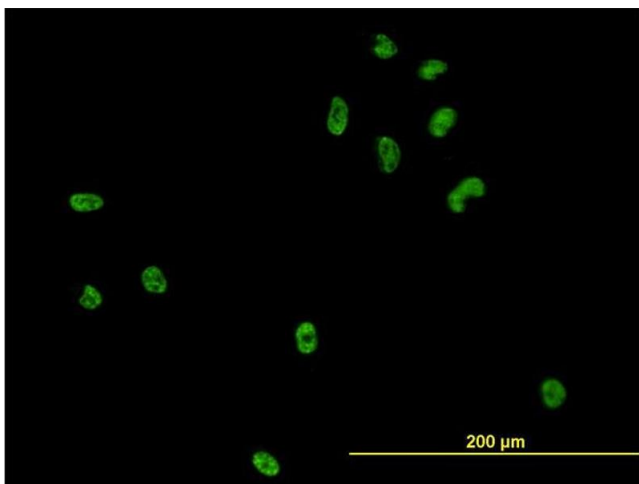
There are more publications referencing this product on: [Product page](#)

Images



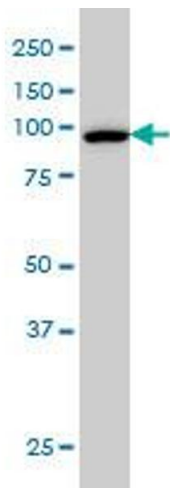
Immunostaining

Image 1. Immunoperoxidase of monoclonal antibody to CSE1L on formalin-fixed paraffin-embedded human prostate. [antibody concentration 3 ug/ml]



Immunofluorescence

Image 2. Immunofluorescence of monoclonal antibody to CSE1L on HeLa cell. [antibody concentration 10 ug/ml]



Western Blotting

Image 3. CSE1L monoclonal antibody (M08), clone 3D8
Western Blot analysis of CSE1L expression in HeLa S3 NE .

Please check the [product details page](#) for more images. Overall 6 images are available for ABIN560494.