



Datasheet for ABIN560504
anti-CSR1 antibody (AA 94-192)



[Go to Product page](#)

2 Images

Overview

Quantity:	50 µL
Target:	CSR1
Binding Specificity:	AA 94-192
Reactivity:	Human
Host:	Mouse
Clonality:	Polyclonal
Conjugate:	This CSR1 antibody is un-conjugated
Application:	Western Blotting (WB), ELISA

Product Details

Purpose:	Mouse polyclonal antibody raised against a partial recombinant CSR1.
Immunogen:	CSR1 (NP_004069, 94 a.a. ~ 192 a.a) partial recombinant protein with GST tag.
Sequence:	EAPGHRPTTN PNASKFAQKI GGSERCPRCS QAVYAAEKVI GAGKSWHKAC FRC AKCGKGL ESTTLADKDG EIYCKGCYAK NFGPKGFGFG QGAGALVHS
Cross-Reactivity:	Human
Characteristics:	Antibody Reactive Against Recombinant Protein.

Target Details

Target:	CSR1
Alternative Name:	CSR1 (CSR1 Products)

Target Details

Background:	Full Gene Name: cysteine and glycine-rich protein 1 Synonyms: CRP,CRP1,CSRP,CYRP,D1S181E,DKFZp686M148
Gene ID:	1465
NCBI Accession:	NM_004078

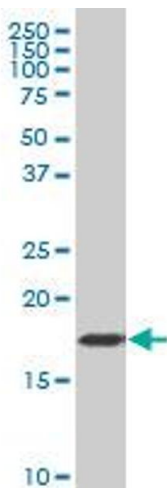
Application Details

Application Notes:	Optimal working dilution should be determined by the investigator.
Restrictions:	For Research Use only

Handling

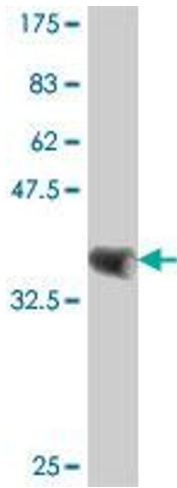
Format:	Liquid
Buffer:	50 % glycerol
Handling Advice:	Aliquot to avoid repeated freezing and thawing.
Storage:	-20 °C
Storage Comment:	Store at -20°C or lower. Aliquot to avoid repeated freezing and thawing.

Images



Western Blotting

Image 1. CSRP1 polyclonal antibody (A01), Lot # 060501JCS1 Western Blot analysis of CSRP1 expression in HepG2 .



Western Blotting

Image 2. Western Blot detection against Immunogen (37 kDa).