

Datasheet for ABIN560520
anti-CTBP2 antibody (AA 138-239)[Go to Product page](#)

1 Image

Overview

Quantity:	50 µL
Target:	CTBP2
Binding Specificity:	AA 138-239
Reactivity:	Human
Host:	Mouse
Clonality:	Polyclonal
Conjugate:	This CTBP2 antibody is un-conjugated
Application:	Western Blotting (WB), ELISA

Product Details

Purpose:	Mouse polyclonal antibody raised against a partial recombinant CTBP2.
Immunogen:	CTBP2 (NP_001320, 138 a.a. ~ 239 a.a) partial recombinant protein with GST tag.
Sequence:	TICHILNLYR RNTWLYQALR EGTRVQSVEQ IREVASGAAR IRGETLGLIG FGRTGQAVAV RAKAFGFSVI FYDPYLQDGI ERS LGVQRVY TLQDLLYQSD CV
Cross-Reactivity:	Human
Characteristics:	Antibody Reactive Against Recombinant Protein.

Target Details

Target:	CTBP2
Alternative Name:	CTBP2 (CTBP2 Products)

Target Details

Background: Full Gene Name: C-terminal binding protein 2
Synonyms:

Gene ID: 1488

NCBI Accession: [NM_001329](#)

Application Details

Application Notes: Optimal working dilution should be determined by the investigator.

Restrictions: For Research Use only

Handling

Format: Liquid

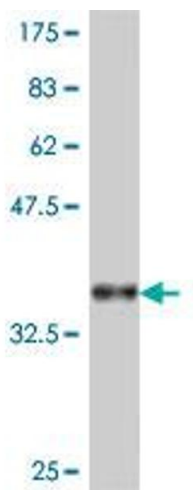
Buffer: 50 % glycerol

Handling Advice: Aliquot to avoid repeated freezing and thawing.

Storage: -20 °C

Storage Comment: Store at -20°C or lower. Aliquot to avoid repeated freezing and thawing.

Images



Western Blotting

Image 1. Western Blot detection against Immunogen (37.33 KDa) .