



[Go to Product page](#)

Datasheet for ABIN560543
anti-CYP1A2 antibody (AA 211-310)

2 Images

Overview

Quantity:	50 µL
Target:	CYP1A2
Binding Specificity:	AA 211-310
Reactivity:	Human
Host:	Mouse
Clonality:	Polyclonal
Conjugate:	This CYP1A2 antibody is un-conjugated
Application:	Western Blotting (WB), ELISA

Product Details

Purpose:	Mouse polyclonal antibody raised against a partial recombinant CYP1A2.
Immunogen:	CYP1A2 (NP_000752, 211 a.a. ~ 310 a.a) partial recombinant protein with GST tag.
Sequence:	ESSDEMLSLV KNTHEFVETA SSGNPLDFFP ILRYLPNPAL QRFKAFNQRF LWFLQKTVQE HYQDFDKNSV RDITGALFKH SKKGPRASGN LIPQEKIVNL
Cross-Reactivity:	Human
Characteristics:	Antibody Reactive Against Recombinant Protein.

Target Details

Target:	CYP1A2
Alternative Name:	CYP1A2 (CYP1A2 Products)

Target Details

Background:	Full Gene Name: cytochrome P450, family 1, subfamily A, polypeptide 2 Synonyms: CP12,P3-450,P450(PA)
Gene ID:	1544
NCBI Accession:	NM_000761

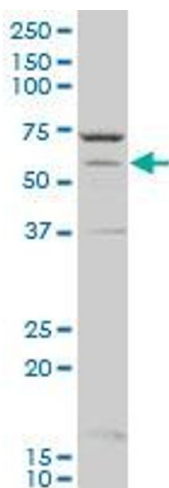
Application Details

Application Notes:	Optimal working dilution should be determined by the investigator.
Restrictions:	For Research Use only

Handling

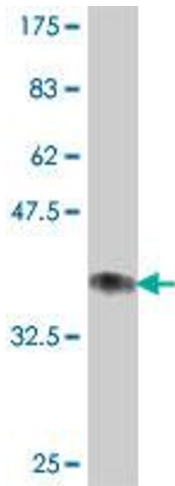
Format:	Liquid
Buffer:	50 % glycerol
Handling Advice:	Aliquot to avoid repeated freezing and thawing.
Storage:	-20 °C
Storage Comment:	Store at -20°C or lower. Aliquot to avoid repeated freezing and thawing.

Images



Western Blotting

Image 1. CYP1A2 polyclonal antibody (A01), Lot # 051122JC01 Western Blot analysis of CYP1A2 expression in A-431 .



Western Blotting

Image 2. Western Blot detection against Immunogen (37.11 kDa).