



[Go to Product page](#)

Datasheet for ABIN560544  
**anti-CYP1B1 antibody (AA 453-542)**

1 Image

Overview

Quantity:	100 µg
Target:	CYP1B1
Binding Specificity:	AA 453-542
Reactivity:	Human
Host:	Mouse
Clonality:	Monoclonal
Conjugate:	This CYP1B1 antibody is un-conjugated
Application:	ELISA

Product Details

Purpose:	Mouse monoclonal antibody raised against a partial recombinant CYP1B1.
Immunogen:	CYP1B1 (NP_000095, 453 a.a. ~ 542 a.a) partial recombinant protein with GST tag. MW of the GST tag alone is 26 KDa.
Sequence:	NKDLTSRVMI FSVGKRRSIG EELSKMQLFL FISILAHQCD FRANPNEPAK MNFSYGLTIK PKSFKVNVTI RESMELLSA VQNLQAKETC
Clone:	2F8
Isotype:	IgG2b
Cross-Reactivity:	Human
Characteristics:	Antibody Reactive Against Recombinant Protein.

## Target Details

Target:	CYP1B1
Alternative Name:	CYP1B1 ( <a href="#">CYP1B1 Products</a> )
Background:	Full Gene Name: cytochrome P450, family 1, subfamily B, polypeptide 1 Synonyms: CP1B, GLC3A, P4501B1
Gene ID:	1545
NCBI Accession:	<a href="#">NM_000104</a>
Pathways:	<a href="#">Steroid Hormone Biosynthesis</a>

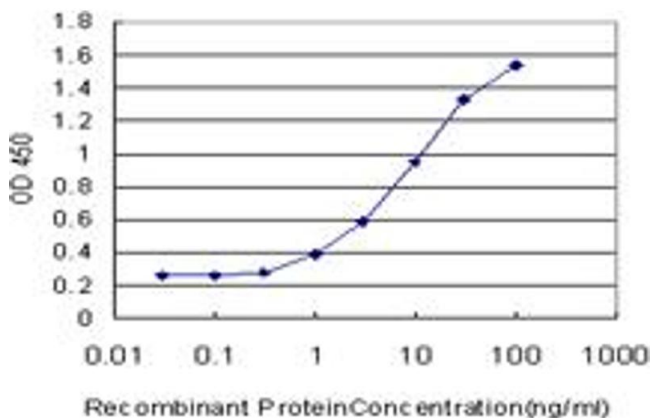
## Application Details

Application Notes:	Optimal working dilution should be determined by the investigator.
Restrictions:	For Research Use only

## Handling

Buffer:	In 1x PBS, pH 7.4
Handling Advice:	Aliquot to avoid repeated freezing and thawing.
Storage:	-20 °C
Storage Comment:	Store at -20°C or lower. Aliquot to avoid repeated freezing and thawing.

## Images



### ELISA

**Image 1.** Detection limit for recombinant GST tagged CYP1B1 is approximately 0.3ng/ml as a capture antibody.