

Datasheet for ABIN560557 anti-DAP Kinase 1 antibody (AA 1211-1310)

[Go to Product page](#)

2 Images

Overview

Quantity:	100 µg
Target:	DAP Kinase 1 (DAPK1)
Binding Specificity:	AA 1211-1310
Reactivity:	Human
Host:	Mouse
Clonality:	Monoclonal
Conjugate:	This DAP Kinase 1 antibody is un-conjugated
Application:	ELISA, Proximity Ligation Assay (PLA)

Product Details

Purpose:	Mouse monoclonal antibody raised against a partial recombinant DAPK1.
Immunogen:	DAPK1 (NP_004929, 1211 a.a. ~ 1310 a.a) partial recombinant protein with GST tag. MW of the GST tag alone is 26 KDa.
Sequence:	LLLD SVCSTI ENV MATT L PG LLTVKHYLSP QQLREHHEPV MIYQPRDFFR AQLTKETSLT NTMGGYKESF SSIMCFGCHD VYSQASLGMD IHASDLNLLT
Clone:	2E7
Isotype:	IgG1
Cross-Reactivity:	Human
Characteristics:	Antibody Reactive Against Recombinant Protein.

Target Details

Target:	DAP Kinase 1 (DAPK1)
Alternative Name:	DAPK1 (DAPK1 Products)
Background:	Full Gene Name: death-associated protein kinase 1 Synonyms: DAPK,DKFZp781I035
Gene ID:	1612
NCBI Accession:	NM_004938
Pathways:	MAPK Signaling, Interferon-gamma Pathway

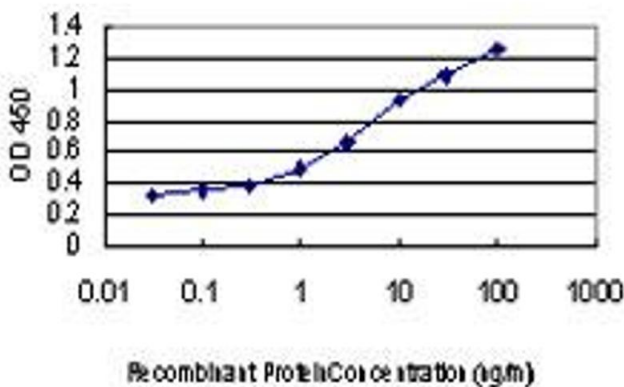
Application Details

Application Notes:	Optimal working dilution should be determined by the investigator.
Restrictions:	For Research Use only

Handling

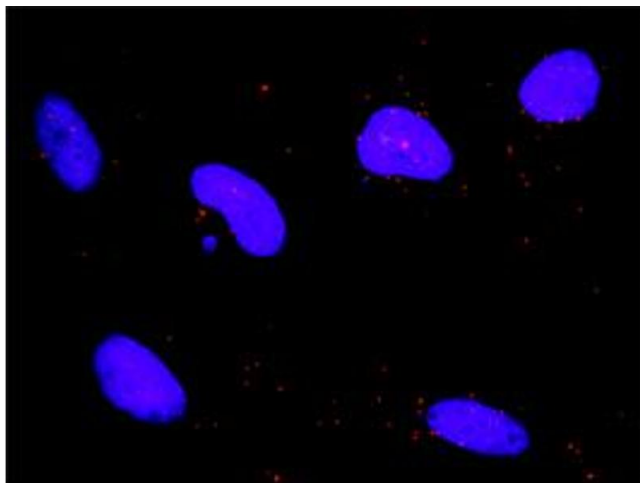
Buffer:	In 1x PBS, pH 7.4
Handling Advice:	Aliquot to avoid repeated freezing and thawing.
Storage:	-20 °C
Storage Comment:	Store at -20°C or lower. Aliquot to avoid repeated freezing and thawing.

Images



ELISA

Image 1. Detection limit for recombinant GST tagged DAPK1 is approximately 0.1ng/ml as a capture antibody.



Proximity Ligation Assay

Image 2. Proximity Ligation Analysis of protein-protein interactions between MAPK3 and DAPK1. HeLa cells were stained with anti-MAPK3 rabbit purified polyclonal 1:1200 and anti-DAPK1 mouse monoclonal antibody 1:50. Each red dot represents the detection of protein-protein interaction complex, and nuclei were counterstained with DAPI (blue).