



[Go to Product page](#)

Datasheet for ABIN560568
anti-DBC1 antibody (AA 662-761)

1 Image

Overview

Quantity:	50 µL
Target:	DBC1 (BRINP1)
Binding Specificity:	AA 662-761
Reactivity:	Human
Host:	Mouse
Clonality:	Polyclonal
Conjugate:	This DBC1 antibody is un-conjugated
Application:	Western Blotting (WB), ELISA

Product Details

Purpose:	Mouse polyclonal antibody raised against a partial recombinant DBC1.
Immunogen:	DBC1 (NP_055433, 662 a.a. ~ 761 a.a) partial recombinant protein with GST tag.
Sequence:	LRFNADLLRS AVQQVNQSYT QGGQFYSSSS VMLLLLDIRD RINRLAPPVA PGKPQLDLFS CMLKHRLKLT NSEIIRVNHA LDLYNTEILK QSDQMTAKLC
Cross-Reactivity:	Human
Characteristics:	Antibody Reactive Against Recombinant Protein.

Target Details

Target:	DBC1 (BRINP1)
Alternative Name:	DBC1 (BRINP1 Products)

Target Details

Background: Full Gene Name: deleted in bladder cancer 1
Synonyms: DBCCR1,FAM5A

Gene ID: 1620

NCBI Accession: [NM_014618](#)

Application Details

Application Notes: Optimal working dilution should be determined by the investigator.

Restrictions: For Research Use only

Handling

Format: Liquid

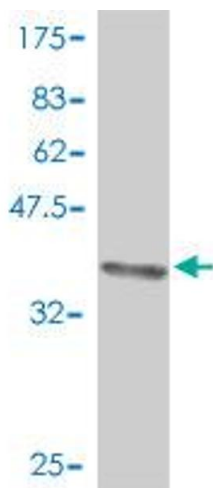
Buffer: 50 % glycerol

Handling Advice: Aliquot to avoid repeated freezing and thawing.

Storage: -20 °C

Storage Comment: Store at -20°C or lower. Aliquot to avoid repeated freezing and thawing.

Images



Western Blotting

Image 1. Western Blot detection against Immunogen (37.11 kDa).