

Datasheet for ABIN560584
anti-GADD45A antibody (AA 76-165)[Go to Product page](#)[2 Images](#)[2 Publications](#)

Overview

Quantity:	100 µg
Target:	GADD45A
Binding Specificity:	AA 76-165
Reactivity:	Human
Host:	Mouse
Clonality:	Monoclonal
Conjugate:	This GADD45A antibody is un-conjugated
Application:	Western Blotting (WB), ELISA, Proximity Ligation Assay (PLA)

Product Details

Purpose:	Mouse monoclonal antibody raised against a partial recombinant GADD45A.
Immunogen:	GADD45A (AAH11757, 76 a.a. ~ 165 a.a) partial recombinant protein with GST tag. MW of the GST tag alone is 26 KDa.
Sequence:	TLIQAFCCEN DINILRVSNP GRLAELLLL TDAGPAASEG AEQPPDLHCV LVTNPHSSQW KDPALSQLIC FCRESRYMDQ WVPVINLPER
Clone:	3D12
Isotype:	IgG1
Cross-Reactivity:	Human
Characteristics:	Antibody Reactive Against Recombinant Protein.

Target Details

Target:	GADD45A
Alternative Name:	GADD45A (GADD45A Products)
Background:	Full Gene Name: growth arrest and DNA-damage-inducible, alpha Synonyms: DDIT1,GADD45
Gene ID:	1647
Pathways:	p53 Signaling , Cell Division Cycle

Application Details

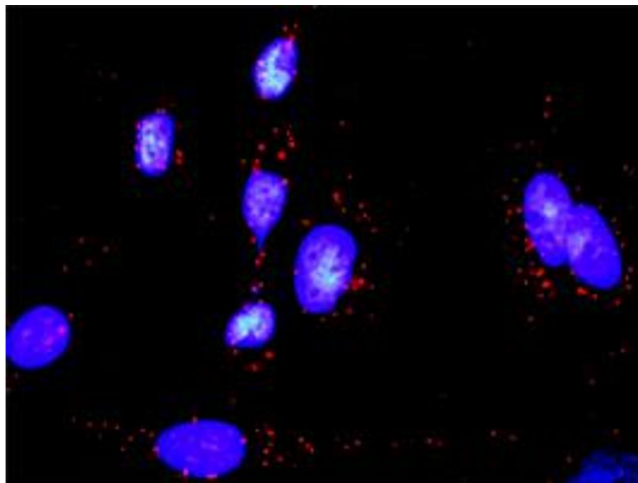
Application Notes:	Optimal working dilution should be determined by the investigator.
Restrictions:	For Research Use only

Handling

Buffer:	In 1x PBS, pH 7.4
Handling Advice:	Aliquot to avoid repeated freezing and thawing.
Storage:	-20 °C
Storage Comment:	Store at -20°C or lower. Aliquot to avoid repeated freezing and thawing.

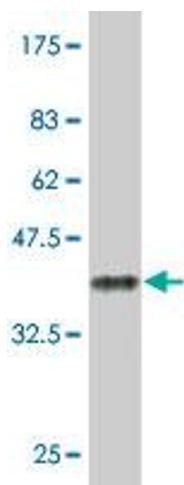
Publications

Product cited in:	<p>Matteucci, Minutolo, Balestrieri, Marino-Merlo, Bramanti, Garaci, Macchi, Mastino: "Inhibition of NF-κB activation sensitizes U937 cells to 3'-azido-3'-deoxythymidine induced apoptosis." in: Cell death & disease, Vol. 1, pp. e81, (2011) (PubMed).</p> <p>Al-Romaih, Sadikovic, Yoshimoto, Wang, Zielenska, Squire: "Decitabine-induced demethylation of 5' CpG island in GADD45A leads to apoptosis in osteosarcoma cells." in: Neoplasia (New York, N.Y.), Vol. 10, Issue 5, pp. 471-80, (2008) (PubMed).</p>
-------------------	--



Proximity Ligation Assay

Image 1. Proximity Ligation Analysis of protein-protein interactions between MAP2K6 and GADD45A. HeLa cells were stained with anti-MAP2K6 rabbit purified polyclonal 1:1200 and anti-GADD45A mouse monoclonal antibody 1:50. Each red dot represents the detection of protein-protein interaction complex, and nuclei were counterstained with DAPI (blue).



Western Blotting

Image 2. Western Blot detection against Immunogen (35.53 kDa) .