



[Go to Product page](#)

Datasheet for ABIN560612

## anti-DLX1 antibody (AA 152-255)

4 Images

1 Publication

### Overview

Quantity:	100 µg
Target:	DLX1
Binding Specificity:	AA 152-255
Reactivity:	Human
Host:	Mouse
Clonality:	Monoclonal
Conjugate:	This DLX1 antibody is un-conjugated
Application:	Western Blotting (WB), ELISA, Immunofluorescence (IF), Immunoprecipitation (IP)

### Product Details

Purpose:	Mouse monoclonal antibody raised against a partial recombinant DLX1.
Immunogen:	DLX1 (NP_835221, 152 a.a. ~ 255 a.a) partial recombinant protein with GST tag. MW of the GST tag alone is 26 KDa.
Sequence:	YLALPERAEL AASLGLTQTQ VKIWFQNKRS KFKKLMKQGG AALEGSALAN GRALSAGSPP VPPGWNPNSS SGKSGGNAG SYIPSYTSWY PSAHQEAMQQ PQLM
Clone:	2H3
Isotype:	IgG2a
Cross-Reactivity:	Human
Characteristics:	Antibody Reactive Against Recombinant Protein.

## Target Details

---

Target:	DLX1
Alternative Name:	DLX1 ( <a href="#">DLX1 Products</a> )
Background:	Full Gene Name: distal-less homeobox 1 Synonyms:
Gene ID:	1745
NCBI Accession:	<a href="#">NM_178120</a>

## Application Details

---

Application Notes:	Optimal working dilution should be determined by the investigator.
Restrictions:	For Research Use only

## Handling

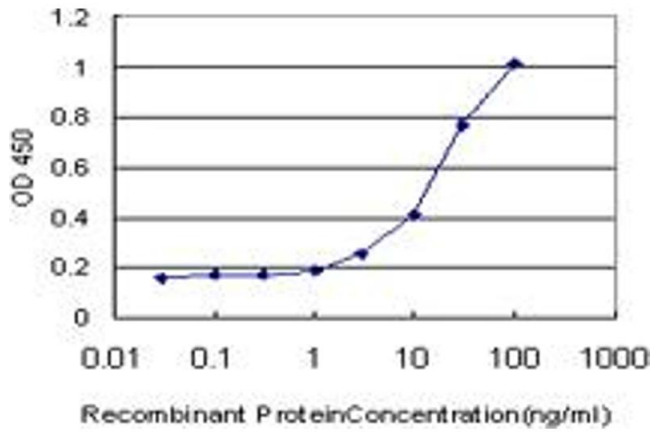
---

Buffer:	In 1x PBS, pH 7.4
Handling Advice:	Aliquot to avoid repeated freezing and thawing.
Storage:	-20 °C
Storage Comment:	Store at -20°C or lower. Aliquot to avoid repeated freezing and thawing.

## Publications

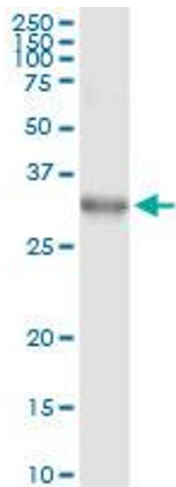
---

Product cited in:	Starkova, Gadgil, Qiu, Zhang, Hermanova, Kornblau, Drabkin: "Up-regulation of homeodomain genes, DLX1 and DLX2, by FLT3 signaling." in: <b>Haematologica</b> , Vol. 96, Issue 6, pp. 820-8, (2011) ( <a href="#">PubMed</a> ).
-------------------	--



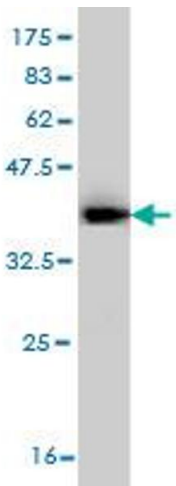
**ELISA**

**Image 1.** Detection limit for recombinant GST tagged DLX1 is approximately 1ng/ml as a capture antibody.



**Immunoprecipitation**

**Image 2.** Immunoprecipitation of DLX1 transfected lysate using anti-DLX1 monoclonal antibody and Protein A Magnetic Bead , and immunoblotted with DLX1 MaxPab rabbit polyclonal antibody.



**Western Blotting**

**Image 3.** Western Blot detection against Immunogen (37.55 KDa) .

Please check the [product details page](#) for more images. Overall 4 images are available for ABIN560612.