



[Go to Product page](#)

Datasheet for ABIN560625
anti-DLX6 antibody (AA 71-160)

1 Image

Overview

Quantity:	50 µL
Target:	DLX6
Binding Specificity:	AA 71-160
Reactivity:	Human
Host:	Mouse
Clonality:	Polyclonal
Conjugate:	This DLX6 antibody is un-conjugated
Application:	Western Blotting (WB), ELISA

Product Details

Purpose:	Mouse polyclonal antibody raised against a partial recombinant DLX6.
Immunogen:	DLX6 (XP_376652, 71 a.a. ~ 160 a.a) partial recombinant protein with GST tag.
Sequence:	PYASGGGNSY NHRSLAAYPY MSHSQHSPYL QSYHNSSAAA QTRGDDTDQQ KTTVIENGEI RFNGKGGKKIR KPRTIYSSLQ LQALNHRFQQ
Cross-Reactivity:	Human
Characteristics:	Antibody Reactive Against Recombinant Protein.

Target Details

Target:	DLX6
Alternative Name:	DLX6 (DLX6 Products)

Target Details

Background:	Full Gene Name: distal-less homeobox 6 Synonyms: MGC125282,MGC125283,MGC125284,MGC125285
Gene ID:	1750
NCBI Accession:	XM_376652

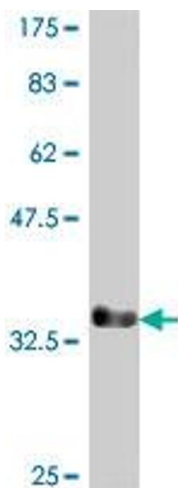
Application Details

Application Notes:	Optimal working dilution should be determined by the investigator.
Restrictions:	For Research Use only

Handling

Format:	Liquid
Buffer:	50 % glycerol
Handling Advice:	Aliquot to avoid repeated freezing and thawing.
Storage:	-20 °C
Storage Comment:	Store at -20°C or lower. Aliquot to avoid repeated freezing and thawing.

Images



Western Blotting

Image 1. Western Blot detection against Immunogen (36.01 KDa) .