

Datasheet for ABIN560646
anti-SLC26A3 antibody (AA 503-600)[Go to Product page](#)

1 Image

Overview

Quantity:	50 µL
Target:	SLC26A3
Binding Specificity:	AA 503-600
Reactivity:	Human
Host:	Mouse
Clonality:	Polyclonal
Conjugate:	This SLC26A3 antibody is un-conjugated
Application:	Western Blotting (WB), ELISA

Product Details

Purpose:	Mouse polyclonal antibody raised against a partial recombinant SLC26A3.
Immunogen:	SLC26A3 (NP_000102, 503 a.a. ~ 600 a.a) partial recombinant protein with GST tag.
Sequence:	TQFPKCSTLA NIGRTNIYKN KKDYDMEYEP EGVKIFRCPS PIYFANIGFF RRKLIDAVGF SPLRILRKRN KALRKIRKLQ KQGLLQVTPK GFICTVDT
Cross-Reactivity:	Human
Characteristics:	Antibody Reactive Against Recombinant Protein.

Target Details

Target:	SLC26A3
Alternative Name:	SLC26A3 (SLC26A3 Products)

Target Details

Background: Full Gene Name: solute carrier family 26, member 3
Synonyms: CLD,DRA

Gene ID: 1811

NCBI Accession: [NM_000111](#)

Application Details

Application Notes: Optimal working dilution should be determined by the investigator.

Restrictions: For Research Use only

Handling

Format: Liquid

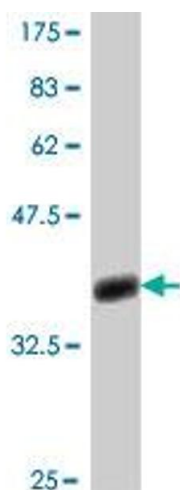
Buffer: 50 % glycerol

Handling Advice: Aliquot to avoid repeated freezing and thawing.

Storage: -20 °C

Storage Comment: Store at -20°C or lower. Aliquot to avoid repeated freezing and thawing.

Images



Western Blotting

Image 1. Western Blot detection against Immunogen (36.89 KDa) .