



[Go to Product page](#)

Datasheet for ABIN560651

## anti-Atrophin 1 antibody (AA 1-110)

### 3 Images

#### Overview

Quantity:	100 µg
Target:	Atrophin 1 (ATN1)
Binding Specificity:	AA 1-110
Reactivity:	Human
Host:	Mouse
Clonality:	Monoclonal
Conjugate:	This Atrophin 1 antibody is un-conjugated
Application:	Western Blotting (WB), ELISA, Immunofluorescence (IF)

#### Product Details

Purpose:	Mouse monoclonal antibody raised against a partial recombinant ATN1.
Immunogen:	ATN1 (AAH51795, 1 a.a. ~ 110 a.a) partial recombinant protein with GST tag. MW of the GST tag alone is 26 KDa.
Sequence:	MKTRQNKDSM SMRSGRKKEA PGPREELRSR GRASPGGVST SSSDGKAEKS RQTAKKARVE EASTPKVKNQ GRSEEISESE SEETNAPKKT KTEQELPRPQ SPSDLDSLGD
Clone:	2C10
Isotype:	IgG1
Cross-Reactivity:	Human
Characteristics:	Antibody Reactive Against Recombinant Protein.

## Target Details

Target:	Atrophin 1 (ATN1)
Alternative Name:	ATN1 ( <a href="#">ATN1 Products</a> )
Background:	Full Gene Name: atrophin 1 Synonyms: B37,D12S755E,DRPLA,NOD
Gene ID:	1822

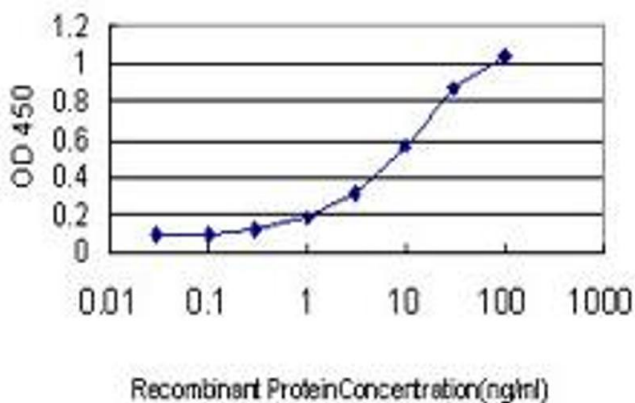
## Application Details

Application Notes:	Optimal working dilution should be determined by the investigator.
Restrictions:	For Research Use only

## Handling

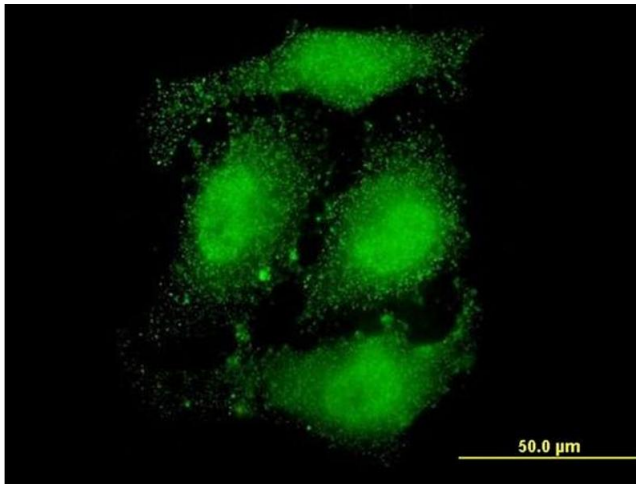
Buffer:	In 1x PBS, pH 7.4
Handling Advice:	Aliquot to avoid repeated freezing and thawing.
Storage:	-20 °C
Storage Comment:	Store at -20°C or lower. Aliquot to avoid repeated freezing and thawing.

## Images



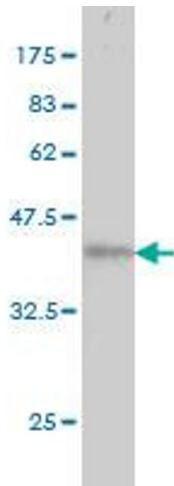
### ELISA

**Image 1.** Detection limit for recombinant GST tagged ATN1 is approximately 0.3ng/ml as a capture antibody.



### Immunofluorescence

**Image 2.** Immunofluorescence of monoclonal antibody to ATN1 on HeLa cell. [antibody concentration 10 ug/ml]



### Western Blotting

**Image 3.** Western Blot detection against Immunogen (37.84 kDa).