



Datasheet for ABIN560663

## anti-DUSP4 antibody (AA 1-394)



[Go to Product page](#)

2 Images

1 Publication

### Overview

Quantity:	100 µg
Target:	DUSP4
Binding Specificity:	AA 1-394
Reactivity:	Human
Host:	Mouse
Clonality:	Monoclonal
Conjugate:	This DUSP4 antibody is un-conjugated
Application:	Western Blotting (WB), ELISA

### Product Details

Purpose:	Mouse monoclonal antibody raised against a full length recombinant DUSP4.
Immunogen:	DUSP4 (AAH02671, 1 a.a. ~ 394 a.a) full-length recombinant protein with GST tag. MW of the GST tag alone is 26 KDa.
Sequence:	MVTMEELREM DCSVLKRLMN RDENGGGAGG SGSHGTLGLP SGGKCLLLDC RPFLAHSAGY ILGSVNVR CN TIVRRRAKGS VSLEQILPAE EEVRARLRSG LYSAVIVYDE RSPRAESLRE DSTVSLVVQA LRRNAERTDI CLLKGGYERF SSEYPEFC SK TKALAAIPPP VPPSATEPLD LGCSSCGTPL HDQGGPVEIL PFLYLGSAYH AARRDMLDAL GITALLNVSS DCPNHFE GHY QYKCI PVEDN HKADISSWFM EAIEYIDAVK DCRGRVLVHC QAGISRSATI CLAYLMMKKR VRLEEAFEFV KQRRSII SPN FFSFMGQLLQF ESQVLATSCA AEAASPSGPL RER GKTPATP TSQFVFSFPV SVGVHSAPSS LPYLHSPITT SPSC
Clone:	3D6-G6

## Product Details

---

Isotype:	IgG1
Cross-Reactivity:	Human
Characteristics:	Antibody Reactive Against Recombinant Protein.

## Target Details

---

Target:	DUSP4
Alternative Name:	DUSP4 ( <a href="#">DUSP4 Products</a> )
Background:	Full Gene Name: dual specificity phosphatase 4 Synonyms: HVH2,MKP-2,MKP2,TYP
Gene ID:	1846
Pathways:	<a href="#">Neurotrophin Signaling Pathway</a> , <a href="#">Activation of Innate immune Response</a> , <a href="#">Toll-Like Receptors Cascades</a>

## Application Details

---

Application Notes:	Optimal working dilution should be determined by the investigator.
Restrictions:	For Research Use only

## Handling

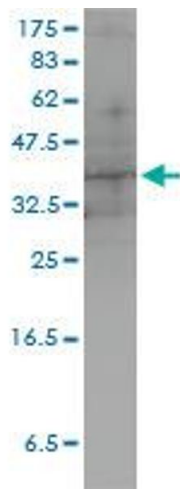
---

Buffer:	In 1x PBS, pH 7.4
Handling Advice:	Aliquot to avoid repeated freezing and thawing.
Storage:	-20 °C
Storage Comment:	Store at -20°C or lower. Aliquot to avoid repeated freezing and thawing.

## Publications

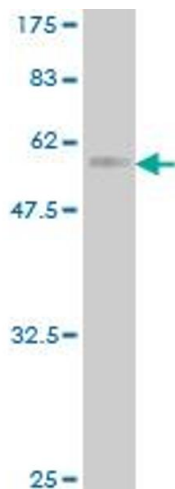
---

Product cited in:	Lee, Huang, Lee, Lee, Ryu, Kim, Kim, Kim, Joung, Kim, Shong, Jo: "Dual specificity phosphatase 6 as a predictor of invasiveness in papillary thyroid cancer." in: <b>European journal of endocrinology / European Federation of Endocrine Societies</b> , Vol. 167, Issue 1, pp. 93-101, (2012) ( <a href="#">PubMed</a> ).
-------------------	---



#### Western Blotting

**Image 1.** DUSP4 monoclonal antibody (M01), clone 3D6-G6  
Western Blot analysis of DUSP4 expression in HeLa .



#### Western Blotting

**Image 2.** Western Blot detection against Immunogen (69.08  
kDa) .