

Datasheet for ABIN560670
anti-DUSP6 antibody (AA 1-381)



[Go to Product page](#)

6 Images

3 Publications

Overview

Quantity:	100 µg
Target:	DUSP6
Binding Specificity:	AA 1-381
Reactivity:	Human
Host:	Mouse
Clonality:	Monoclonal
Conjugate:	This DUSP6 antibody is un-conjugated
Application:	Western Blotting (WB), ELISA, Immunofluorescence (IF), Immunohistochemistry (Paraffin-embedded Sections) (IHC (p)), RNA Interference (RNAi)

Product Details

Purpose:	Mouse monoclonal antibody raised against a full length recombinant DUSP6.
Immunogen:	DUSP6 (AAH03143, 1 a.a. ~ 381 a.a) full-length recombinant protein with GST tag. MW of the GST tag alone is 26 KDa.
Sequence:	MIDTLRPVPF ASEMAISKTV AWLNEQLELG NERLLLMDCR PQELYESSHI ESAINVAIPG IMLRRLQKGN LPVRALFTRG EDRDRFTRRC GTDTRVLYDE SSSDWNENTG GESLLGLLLK KLKDEGCRAF YLEGGFSKFQ AEFSLHCETN LDGSCSSSSP PLPVLGLGGL RISSDSSSDI ESDLDRDPNS ATDSDGSPLS NSQPSFPVEI LPFLYLGCAK DSTNLDVLEE FGIKYILNVT PNLPNLFENA GEFKYKQIPI SDHWSQNLQ FFPEAISFID EARGKNCVGL VHCLAGISRS VTVTVAAYLMQ KLNLSMNDAY DIVKMKKSNI SPNFNFMGQL LDFERTLGLS SPCDNRVPAQ QLYFTTPSNQ NVYQVDSLQS T

Product Details

Clone:	3G2
Isotype:	IgG1
Cross-Reactivity:	Human
Characteristics:	Antibody Reactive Against Recombinant Protein.

Target Details

Target:	DUSP6
Alternative Name:	DUSP6 (DUSP6 Products)
Background:	Full Gene Name: dual specificity phosphatase 6 Synonyms: MKP3,PYST1
Gene ID:	1848
Pathways:	Neurotrophin Signaling Pathway , Activation of Innate immune Response , Toll-Like Receptors Cascades

Application Details

Application Notes:	Optimal working dilution should be determined by the investigator.
Restrictions:	For Research Use only

Handling

Buffer:	In 1x PBS, pH 7.4
Handling Advice:	Aliquot to avoid repeated freezing and thawing.
Storage:	-20 °C
Storage Comment:	Store at -20°C or lower. Aliquot to avoid repeated freezing and thawing.

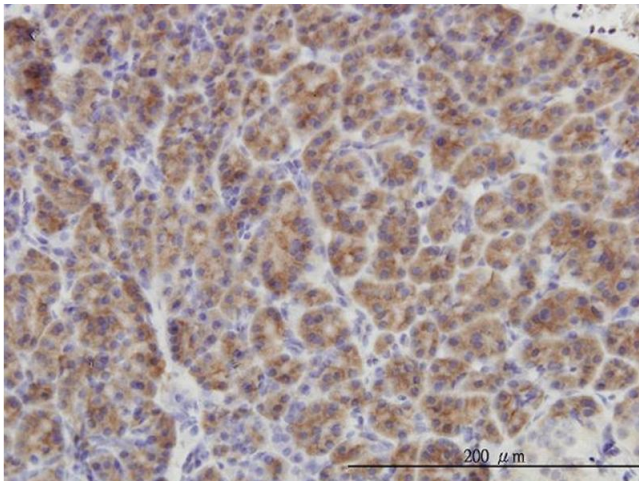
Publications

Product cited in:	Kim, Choi, Han, Lee, Soh, Park, Kim, Park: "TSH signaling overcomes B-RafV600E-induced senescence in papillary thyroid carcinogenesis through regulation of DUSP6." in: Neoplasia (New York, N.Y.) , Vol. 16, Issue 12, pp. 1107-20, (2014) (PubMed).
	Lee, Huang, Lee, Lee, Ryu, Kim, Kim, Kim, Joung, Kim, Shong, Jo: "Dual specificity phosphatase

6 as a predictor of invasiveness in papillary thyroid cancer." in: **European journal of endocrinology / European Federation of Endocrine Societies**, Vol. 167, Issue 1, pp. 93-101, (2012) ([PubMed](#)).

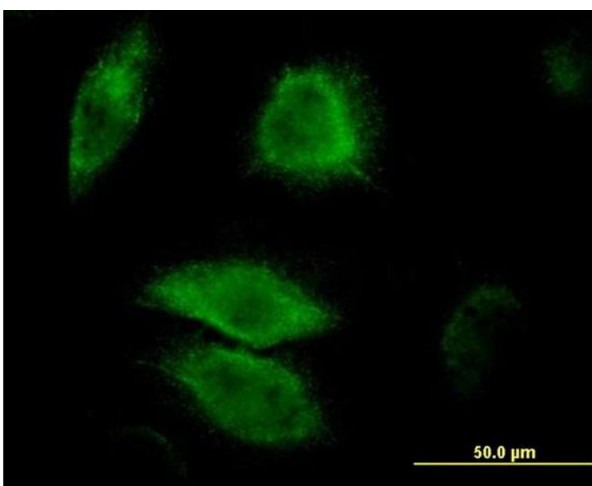
Okudela, Yazawa, Woo, Sakaeda, Ishii, Mitsui, Shimoyamada, Sato, Tajiri, Ogawa, Masuda, Takahashi, Sugimura, Kitamura: "Down-regulation of DUSP6 expression in lung cancer: its mechanism and potential role in carcinogenesis." in: **The American journal of pathology**, Vol. 175, Issue 2, pp. 867-81, (2009) ([PubMed](#)).

Images



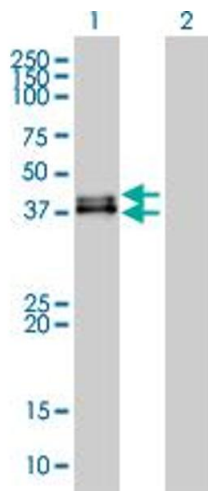
Immunostaining

Image 1. Immunoperoxidase of monoclonal antibody to DUSP6 on formalin-fixed paraffin-embedded human pancreas. [antibody concentration 3 ug/ml]



Immunofluorescence

Image 2. Immunofluorescence of monoclonal antibody to DUSP6 on HeLa cell. [antibody concentration 10 ug/ml]



Western Blotting

Image 3. Western Blot analysis of DUSP6 expression in transfected 293T cell line by DUSP6 monoclonal antibody (M01), clone 3G2.

Lane 1: DUSP6 transfected lysate(42 KDa).

Lane 2: Non-transfected lysate.

Please check the [product details page](#) for more images. Overall 6 images are available for ABIN560670.