

Datasheet for ABIN560676  
**anti-E2F1 antibody (AA 348-437)**

## 5 Images

[Go to Product page](#)

## Overview

Quantity:	100 µg
Target:	E2F1
Binding Specificity:	AA 348-437
Reactivity:	Human
Host:	Mouse
Clonality:	Monoclonal
Conjugate:	This E2F1 antibody is un-conjugated
Application:	Western Blotting (WB), ELISA, Proximity Ligation Assay (PLA)

## Product Details

Purpose:	Mouse monoclonal antibody raised against a partial recombinant E2F1.
Immunogen:	E2F1 (NP_005216.1, 348 a.a. ~ 437 a.a) partial recombinant protein with GST tag. MW of the GST tag alone is 26 KDa.
Sequence:	QSLLSLEQEP LLSRMGSLRA PVDEDRLSPL VAADSLLEHV REDFSGLLPE EFISLSPHE ALDYHFGLEE GEGIRDLFDC DFGDLTPLDF
Clone:	2E10
Isotype:	IgG2a
Cross-Reactivity:	Human
Characteristics:	Antibody Reactive Against Recombinant Protein.

## Target Details

Target:	E2F1
Alternative Name:	E2F1 ( <a href="#">E2F1 Products</a> )
Background:	Full Gene Name: E2F transcription factor 1 Synonyms: E2F-1,RBAP1,RBBP3,RBP3
Gene ID:	1869
NCBI Accession:	<a href="#">NM_005225</a>
Pathways:	<a href="#">p53 Signaling</a> , <a href="#">Cell Division Cycle</a> , <a href="#">Mitotic G1-G1/S Phases</a> , <a href="#">DNA Replication</a> , <a href="#">M Phase</a> , <a href="#">Autophagy</a>

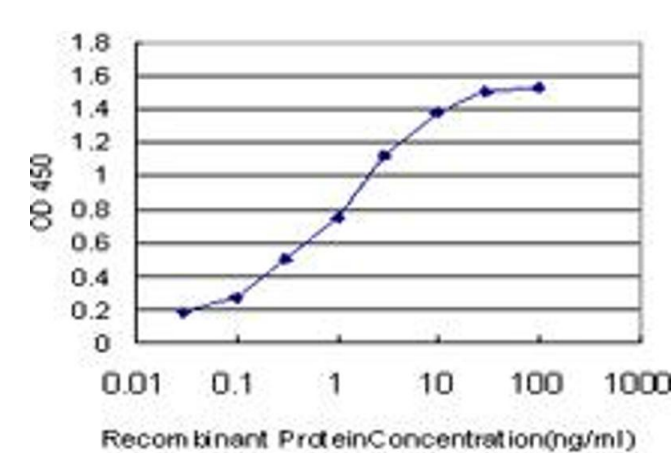
## Application Details

Application Notes:	Optimal working dilution should be determined by the investigator.
Restrictions:	For Research Use only

## Handling

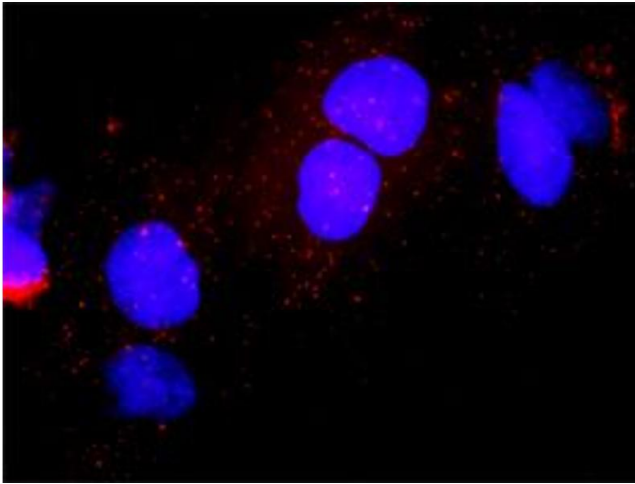
Buffer:	In 1x PBS, pH 7.4
Handling Advice:	Aliquot to avoid repeated freezing and thawing.
Storage:	-20 °C
Storage Comment:	Store at -20°C or lower. Aliquot to avoid repeated freezing and thawing.

## Images



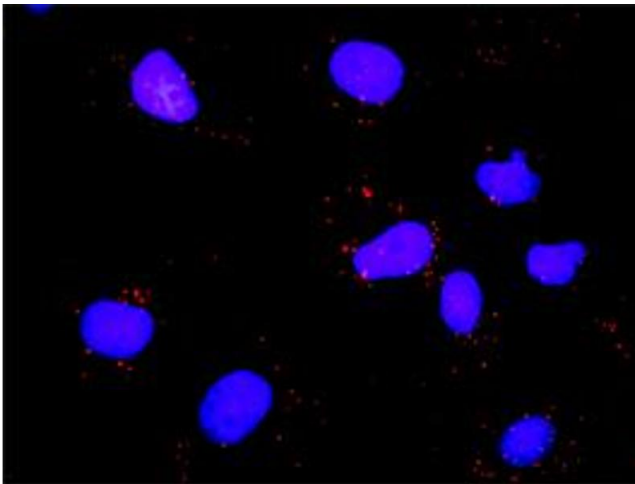
### ELISA

**Image 1.** Detection limit for recombinant GST tagged E2F1 is approximately 0.03ng/ml as a capture antibody.



#### Proximity Ligation Assay

**Image 2.** Proximity Ligation Analysis of protein-protein interactions between CDK7 and E2F1. Huh7 cells were stained with anti-CDK7 rabbit purified polyclonal 1:1200 and anti-E2F1 mouse monoclonal antibody 1:50. Each red dot represents the detection of protein-protein interaction complex, and nuclei were counterstained with DAPI (blue).



#### Proximity Ligation Assay

**Image 3.** Proximity Ligation Analysis of protein-protein interactions between MYBL2 and E2F1. Mahlavu cells were stained with anti-MYBL2 rabbit purified polyclonal 1:1200 and anti-E2F1 mouse monoclonal antibody 1:50. Each red dot represents the detection of protein-protein interaction complex, and nuclei were counterstained with DAPI (blue).

Please check the [product details page](#) for more images. Overall 5 images are available for ABIN560676.