



[Go to Product page](#)

Datasheet for ABIN560678  
**anti-E2F3 antibody (AA 1-133)**

1 Image

### Overview

Quantity:	50 µL
Target:	E2F3
Binding Specificity:	AA 1-133
Reactivity:	Human
Host:	Mouse
Clonality:	Polyclonal
Conjugate:	This E2F3 antibody is un-conjugated
Application:	Western Blotting (WB), ELISA

### Product Details

Purpose:	Mouse polyclonal antibody raised against a full-length recombinant E2F3.
Immunogen:	E2F3 (AAH16847, 1 a.a. ~ 133 a.a) full-length recombinant protein with GST tag.
Sequence:	MQSGGGVKTD DTSTLNSLCG YAWVYVWEEK QRCRLSSFFS SSASIPGLLP SHTLIDLQNV GVVLDEALGW GRERELCVKC LLEMHCGVFS CMGNHLCQAF PHFPYLSHLV SCLCFQLCVI LFASCTKLIF SKV
Cross-Reactivity:	Human
Characteristics:	Antibody Reactive Against Recombinant Protein.

### Target Details

Target:	E2F3
---------	------

## Target Details

Abstract: [E2F3 Products](#)

Background: Full Gene Name: E2F transcription factor 3  
Synonyms: DKFZp686C18211,E2F-3,KIAA0075,MGC104598

Gene ID: 1871

## Application Details

Application Notes: Optimal working dilution should be determined by the investigator.

Restrictions: For Research Use only

## Handling

Format: Liquid

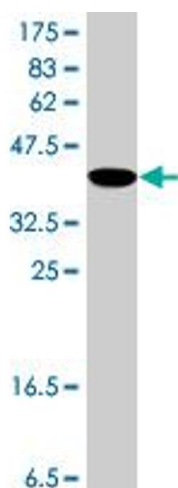
Buffer: 50 % glycerol

Handling Advice: Aliquot to avoid repeated freezing and thawing.

Storage: -20 °C

Storage Comment: Store at -20°C or lower. Aliquot to avoid repeated freezing and thawing.

## Images



### Western Blotting

**Image 1.** Western Blot detection against Immunogen (40.74 kDa).