

Datasheet for ABIN560679
anti-E2F3 antibody (AA 336-425)

5 Images

[Go to Product page](#)

Overview

Quantity:	100 µg
Target:	E2F3
Binding Specificity:	AA 336-425
Reactivity:	Human
Host:	Mouse
Clonality:	Monoclonal
Conjugate:	This E2F3 antibody is un-conjugated
Application:	Western Blotting (WB), ELISA, Proximity Ligation Assay (PLA)

Product Details

Purpose:	Mouse monoclonal antibody raised against a partial recombinant E2F3.
Immunogen:	E2F3 (NP_001940, 336 a.a. ~ 425 a.a) partial recombinant protein with GST tag. MW of the GST tag alone is 26 KDa.
Sequence:	QIHLASTQGP IEVYLCPEET ETHSPMKTNN QDHNGNIPKP ASKDLASTNS GHSDCSVSMG NLSPLASPAN LLQQTEDQIP SNLEGPVFVN
Clone:	5F7
Isotype:	IgG1
Cross-Reactivity:	Human
Characteristics:	Antibody Reactive Against Recombinant Protein.

Target Details

Target:	E2F3
Abstract:	E2F3 Products
Background:	Full Gene Name: E2F transcription factor 3 Synonyms: DKFZp686C18211,E2F-3,KIAA0075,MGC104598
Gene ID:	1871
NCBI Accession:	NM_001949

Application Details

Application Notes:	Optimal working dilution should be determined by the investigator.
Restrictions:	For Research Use only

Handling

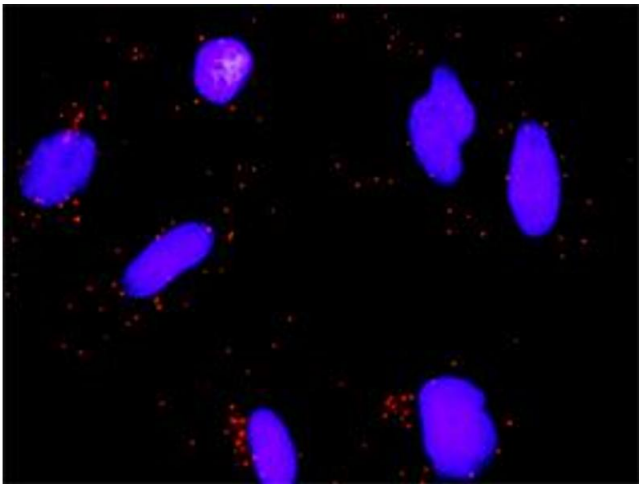
Buffer:	In 1x PBS, pH 7.4
Handling Advice:	Aliquot to avoid repeated freezing and thawing.
Storage:	-20 °C
Storage Comment:	Store at -20°C or lower. Aliquot to avoid repeated freezing and thawing.

Images



Western Blotting

Image 1. E2F3 monoclonal antibody (M01), clone 5F7
Western Blot analysis of E2F3 expression in COLO 320 HSR

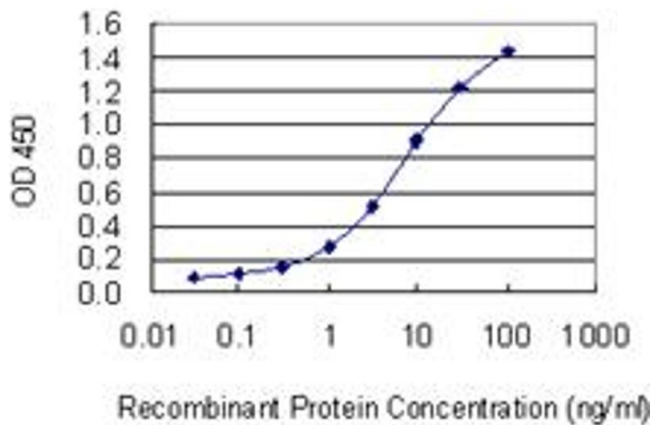


Proximity Ligation Assay

Image 2. Proximity Ligation Analysis of protein-protein interactions between MSH2 and E2F3. HeLa cells were stained with anti-MSH2 rabbit purified polyclonal 1:1200 and anti-E2F3 mouse monoclonal antibody 1:50. Each red dot represents the detection of protein-protein interaction complex, and nuclei were counterstained with DAPI (blue).

ELISA

Image 3. Detection limit for recombinant GST tagged E2F3 is 0.1 ng/ml as a capture antibody.



Please check the [product details page](#) for more images. Overall 5 images are available for ABIN560679.