



[Go to Product page](#)

Datasheet for ABIN560683

anti-E2F6 antibody (AA 1-281)

3 Images

Overview

Quantity:	100 µg
Target:	E2F6
Binding Specificity:	AA 1-281
Reactivity:	Human
Host:	Mouse
Clonality:	Monoclonal
Conjugate:	This E2F6 antibody is un-conjugated
Application:	Western Blotting (WB), ELISA, Immunofluorescence (IF)

Product Details

Purpose:	Mouse monoclonal antibody raised against a full length recombinant E2F6.
Immunogen:	E2F6 (AAH08348, 1 a.a. ~ 281 a.a) full-length recombinant protein with GST tag. MW of the GST tag alone is 26 KDa.
Sequence:	MSQQRPAKRL PSLLLDPTEE TVRRRCRDPI NVEGLLPSKI RINLEDNVQY VSMRKALKVK RPRFDVSLVY LTRKFMDLVR SAPGGILDN KVATKLGVRK RRVYDITNVL DGIDLVEKKS KNHIRWIGSD LSNFGAVPQQ KKLQEELSDL SAMEDALDEL IKDCAQLFE LTDDKENERL AYVTYQDIHS IQAFHEQIVI AVKAPAETRL DVPAPREDSI TVHIRSTNGP IDVYLCEVEQ GQTSNKRSEG VGTSSSESTH PEGPEEEENP QQSEELLEVS N
Clone:	1F7-A9
Isotype:	IgG2a
Cross-Reactivity:	Human, Rat

Product Details

Characteristics: Antibody Reactive Against Recombinant Protein.

Target Details

Target: E2F6

Alternative Name: E2F6 ([E2F6 Products](#))

Background: Full Gene Name: E2F transcription factor 6
Synonyms: E2F-6,MGC111545

Gene ID: 1876

Application Details

Application Notes: Optimal working dilution should be determined by the investigator.

Restrictions: For Research Use only

Handling

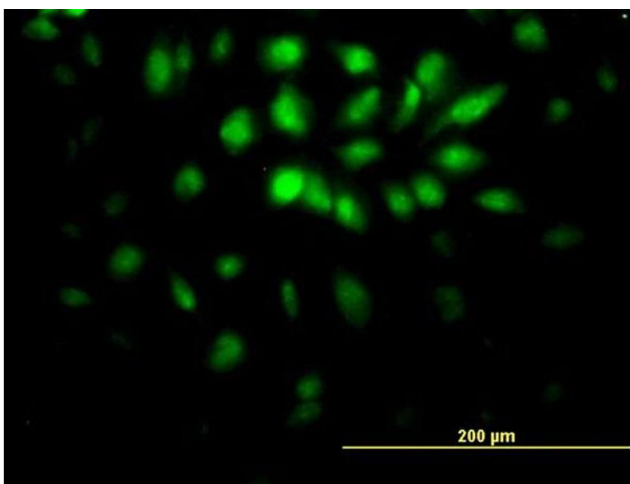
Buffer: In 1x PBS, pH 7.4

Handling Advice: Aliquot to avoid repeated freezing and thawing.

Storage: -20 °C

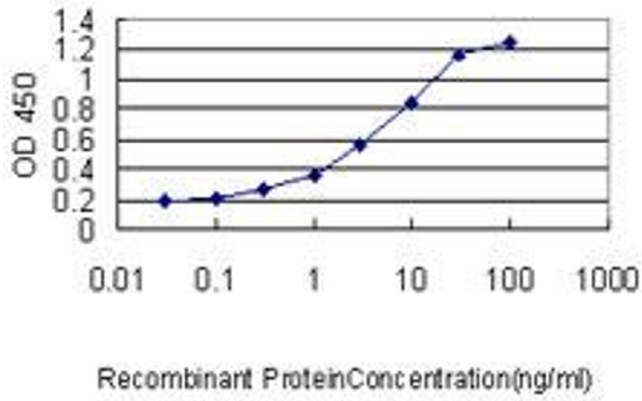
Storage Comment: Store at -20°C or lower. Aliquot to avoid repeated freezing and thawing.

Images



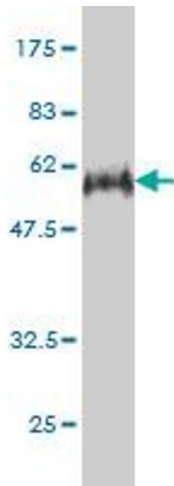
Immunofluorescence

Image 1. Immunofluorescence of monoclonal antibody to E2F6 on HeLa cell. [antibody concentration 10 ug/ml]



ELISA

Image 2. Detection limit for recombinant GST tagged E2F6 is approximately 0.03ng/ml as a capture antibody.



Western Blotting

Image 3. Western Blot detection against Immunogen (56.65 kDa).