



[Go to Product page](#)

Datasheet for ABIN560687

anti-S1PR1 antibody (AA 1-47)

4 Images

Overview

Quantity:	100 µg
Target:	S1PR1
Binding Specificity:	AA 1-47
Reactivity:	Human
Host:	Mouse
Clonality:	Monoclonal
Conjugate:	This S1PR1 antibody is un-conjugated
Application:	Western Blotting (WB), ELISA

Product Details

Purpose:	Mouse monoclonal antibody raised against a partial recombinant EDG1.
Immunogen:	EDG1 (AAH18650, 1 a.a. ~ 47 a.a) partial recombinant protein with GST tag. MW of the GST tag alone is 26 KDa.
Sequence:	MGPTSVPLVK AHRSSVSDYV NYDIIVRHYN YTGKLNISAD KENSIKL
Clone:	2E12
Isotype:	IgG1
Cross-Reactivity:	Human
Characteristics:	Antibody Reactive Against Recombinant Protein.

Target Details

Target:	S1PR1
Alternative Name:	S1PR1 (S1PR1 Products)
Background:	Full Gene Name: sphingosine-1-phosphate receptor 1 Synonyms: CHEDG1,D1S3362,ECGF1,EDG-1,EDG1,FLJ58121,S1P1
Gene ID:	1901
Pathways:	Signaling Events mediated by VEGFR1 and VEGFR2

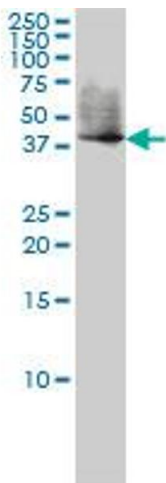
Application Details

Application Notes:	Optimal working dilution should be determined by the investigator.
Restrictions:	For Research Use only

Handling

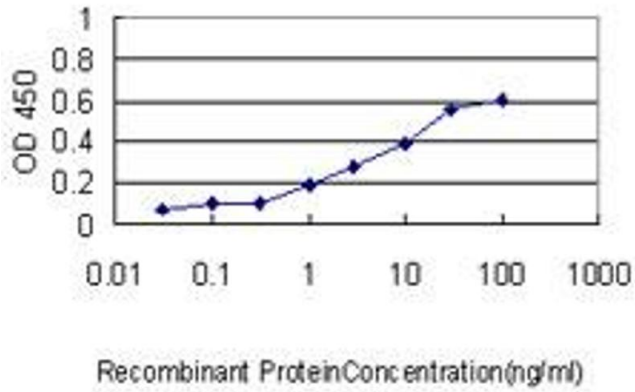
Buffer:	In 1x PBS, pH 7.4
Handling Advice:	Aliquot to avoid repeated freezing and thawing.
Storage:	-20 °C
Storage Comment:	Store at -20°C or lower. Aliquot to avoid repeated freezing and thawing.

Images



Western Blotting

Image 1. EDG1 monoclonal antibody (M01), clone 2E12
Western Blot analysis of EDG1 expression in Jurkat .



ELISA

Image 2. Detection limit for recombinant GST tagged EDG1 is approximately 0.1 ng/ml as a capture antibody.



Western Blotting

Image 3. Western Blot analysis of EDG1 expression in transfected 293T cell line by EDG1 monoclonal antibody (M01), clone 2E12.

Lane 1: EDG1 transfected lysate(42.8 kDa).

Lane 2: Non-transfected lysate.

Please check the [product details page](#) for more images. Overall 4 images are available for ABIN560687.