

Datasheet for ABIN560732
anti-ELK1 antibody (AA 67-166)

2 Images

[Go to Product page](#)

Overview

Quantity:	100 µg
Target:	ELK1
Binding Specificity:	AA 67-166
Reactivity:	Human
Host:	Mouse
Clonality:	Monoclonal
Conjugate:	This ELK1 antibody is un-conjugated
Application:	ELISA, Proximity Ligation Assay (PLA)

Product Details

Purpose:	Mouse monoclonal antibody raised against a partial recombinant ELK1.
Immunogen:	ELK1 (NP_005220, 67 a.a. ~ 166 a.a) partial recombinant protein with GST tag. MW of the GST tag alone is 26 KDa.
Sequence:	YYDKNIIRKV SGQKFVYKFV SYPEVAGCST EDCPPQPEVS VTSTMPNVAP AAIHAAPGDT VSGKPGTPKG AGMAGPGGLA RSSRNEYMRS GLYSTFTIQS
Clone:	2G6
Isotype:	IgG2a
Cross-Reactivity:	Human
Characteristics:	Antibody Reactive Against Recombinant Protein.

Target Details

Target:	ELK1
Alternative Name:	ELK1 (ELK1 Products)
Background:	Full Gene Name: ELK1, member of ETS oncogene family Synonyms:
Gene ID:	2002
NCBI Accession:	NM_005229
Pathways:	MAPK Signaling , Neurotrophin Signaling Pathway , Activation of Innate immune Response , Toll-Like Receptors Cascades , Signaling of Hepatocyte Growth Factor Receptor , BCR Signaling

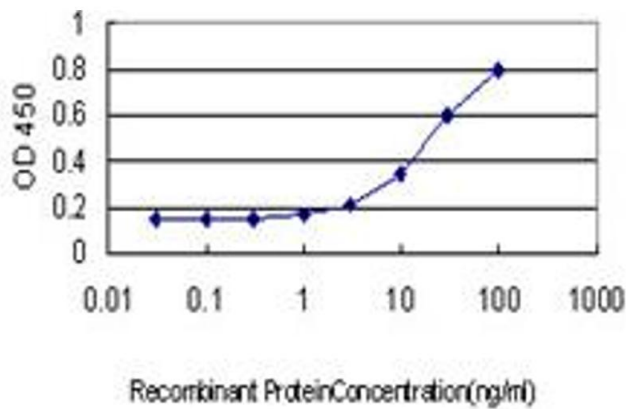
Application Details

Application Notes:	Optimal working dilution should be determined by the investigator.
Restrictions:	For Research Use only

Handling

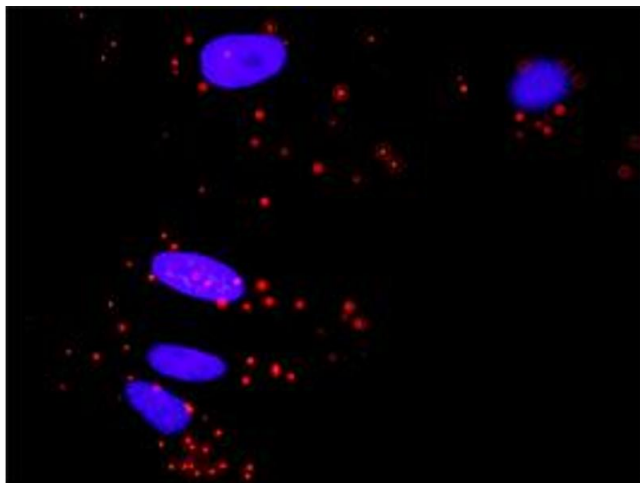
Buffer:	In 1x PBS, pH 7.4
Handling Advice:	Aliquot to avoid repeated freezing and thawing.
Storage:	-20 °C
Storage Comment:	Store at -20°C or lower. Aliquot to avoid repeated freezing and thawing.

Images



ELISA

Image 1. Detection limit for recombinant GST tagged ELK1 is approximately 1 ng/ml as a capture antibody.



Proximity Ligation Assay

Image 2. Proximity Ligation Analysis of protein-protein interactions between MAPK3 and ELK1. HeLa cells were stained with anti-MAPK3 rabbit purified polyclonal 1:1200 and anti-ELK1 mouse monoclonal antibody 1:50. Each red dot represents the detection of protein-protein interaction complex, and nuclei were counterstained with DAPI (blue).