



[Go to Product page](#)

Datasheet for ABIN560735

## anti-EMP1 antibody (AA 1-157)

1 Image

5 Publications

### Overview

Quantity:	50 µL
Target:	EMP1
Binding Specificity:	AA 1-157
Reactivity:	Human
Host:	Mouse
Clonality:	Polyclonal
Conjugate:	This EMP1 antibody is un-conjugated
Application:	ELISA, Western Blotting (WB)

### Product Details

Purpose:	Mouse polyclonal antibody raised against a full-length recombinant EMP1.
Immunogen:	EMP1 (AAH47300, 1 a.a. ~ 157 a.a) full-length recombinant protein with GST tag.
Sequence:	MLVLLAGIFV VHIATVIMLF VSTIANVWLV SNTVDASVGL WKNCTNISCS DLSYASEDA LKTVQAFMIL SIIFCVIAL VVVFQLFTME KGNRFFLSGA TTLVCWLCIL VGVSIYTSHY ANRDGTQYHH GYSYILGWIC FCFSFIIGVL YLVLRKK
Cross-Reactivity:	Human
Characteristics:	Antibody Reactive Against Recombinant Protein.

### Target Details

Target:	EMP1
---------	------

## Target Details

---

Alternative Name:	EMP1 ( <a href="#">EMP1 Products</a> )
Background:	Full Gene Name: epithelial membrane protein 1 Synonyms: CL-20,EMP-1,TMP
Gene ID:	2012

## Application Details

---

Application Notes:	Optimal working dilution should be determined by the investigator.
Restrictions:	For Research Use only

## Handling

---

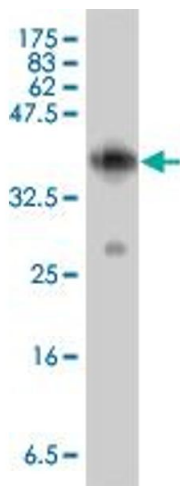
Format:	Liquid
Buffer:	50 % glycerol
Handling Advice:	Aliquot to avoid repeated freezing and thawing.
Storage:	-20 °C
Storage Comment:	Store at -20°C or lower. Aliquot to avoid repeated freezing and thawing.

## Publications

---

Product cited in:	<p>Li, Martijn, Cui, Essaghir, Luque, Demoulin, Castaño, Öberg, Giandomenico: "The somatostatin analogue octreotide inhibits growth of small intestine neuroendocrine tumour cells." in: <b>PLoS ONE</b>, Vol. 7, Issue 10, pp. e48411, (2012) (<a href="#">PubMed</a>).</p> <p>Li, Xiong, Hu, Zhang: "Epithelial membrane protein 1 inhibits human spinal chondrocyte differentiation." in: <b>Anatomical record (Hoboken, N.J. : 2007)</b>, Vol. 294, Issue 6, pp. 1015-24, (2011) (<a href="#">PubMed</a>).</p> <p>Zhang, Cao, Xu, Chen: "The expression of EMP1 is downregulated in oral squamous cell carcinoma and possibly associated with tumour metastasis." in: <b>Journal of clinical pathology</b>, Vol. 64, Issue 1, pp. 25-9, (2010) (<a href="#">PubMed</a>).</p> <p>Li, Xue, Wang, Xu, Xi, Yuan, Wang, Chen, Zhang, Yao: "Up-regulation of epithelial membrane protein-1 in the temporal neocortex of patients with intractable epilepsy." in: <b>Neurochemical research</b>, Vol. 34, Issue 9, pp. 1594-602, (2009) (<a href="#">PubMed</a>).</p>
-------------------	--

Turashvili, Bouchal, Baumforth, Wei, Dziechciarkova, Ehrmann, Klein, Fridman, Skarda, Srovnal, Hajduch, Murray, Kolar: "Novel markers for differentiation of lobular and ductal invasive breast carcinomas by laser microdissection and microarray analysis." in: **BMC cancer**, Vol. 7, pp. 55, (2007) ([PubMed](#)).



#### Western Blotting

**Image 1.** Western Blot detection against Immunogen (43.38 kDa) .