



[Go to Product page](#)

Datasheet for ABIN560736
anti-EMP3 antibody (AA 25-68)

1 Image

Overview

Quantity:	50 µL
Target:	EMP3
Binding Specificity:	AA 25-68
Reactivity:	Human
Host:	Mouse
Clonality:	Polyclonal
Conjugate:	This EMP3 antibody is un-conjugated
Application:	ELISA, Western Blotting (WB)

Product Details

Purpose:	Mouse polyclonal antibody raised against a partial recombinant EMP3.
Immunogen:	EMP3 (NP_001416.1, 25 a.a. ~ 68 a.a) partial recombinant protein with GST tag.
Sequence:	DKSWWTLP GK ESLNLWYDCT WNNDTKTWAC SNVSENGWLK AVQV
Cross-Reactivity:	Human
Characteristics:	Antibody Reactive Against Recombinant Protein.

Target Details

Target:	EMP3
Alternative Name:	EMP3 (EMP3 Products)
Background:	Full Gene Name: epithelial membrane protein 3

Target Details

Synonyms: YMP

Gene ID: 2014

NCBI Accession: [NM_001425](#)

Application Details

Application Notes: Optimal working dilution should be determined by the investigator.

Restrictions: For Research Use only

Handling

Format: Liquid

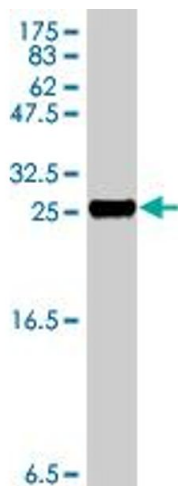
Buffer: 50 % glycerol

Handling Advice: Aliquot to avoid repeated freezing and thawing.

Storage: -20 °C

Storage Comment: Store at -20°C or lower. Aliquot to avoid repeated freezing and thawing.

Images



Western Blotting

Image 1. Western Blot detection against Immunogen (30.95 kDa).